



Burnt Ash Hill, SE12

£300,000

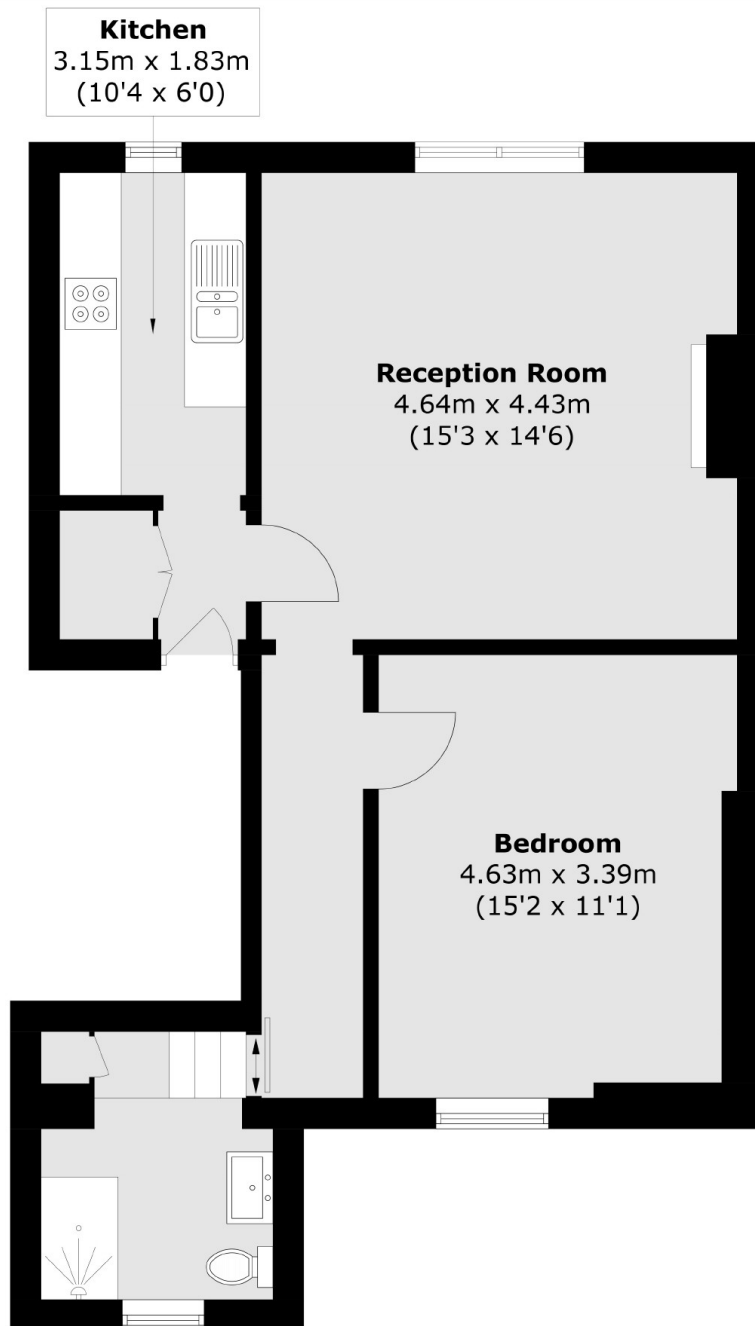
This charming one-bedroom flat, set within a Victorian conversion on Burnt Ash Hill, offers a wonderful combination of character and practicality. The spacious lounge provides a bright and inviting space, ideal for relaxing or entertaining. One of the standout features of this flat is the private garden, offering a peaceful outdoor retreat perfect for enjoying the fresh air or gardening. The property is offered with no upward chain, making for a smooth and hassle-free move. With its convenient location and well-proportioned living space, this flat is a perfect choice for first-time buyers or those seeking a low-maintenance home.

Located on the ever popular Burnt Ash Hill, 10 minutes' walk from Lee Station & with great access to the South Circular. This property is perfect for a couple or professional looking to move to the area.

Features

- No Upward Chain
- One Double Bedroom
- Private Garden
- Victorian Conversion Flat
- Spacious Lounge
- Ideal First Home

Burnt Ash Hill, London, SE12



Total area (approx.): 56.9 sq. m (612.5 sq. ft)

Dexters

Lee
430-432 Lee High Road
Lee
London
Sales
020 8815 2210

Energy Rating: D. We aim to make our particulars both accurate and reliable. However they are not guaranteed; nor do they form part of an offer or contract. If you require clarification on any points then please contact us, especially if you're traveling some distance to view. Please note that appliances and heating systems have not been tested and therefore no warranties can be given as to their good working order.

 **RICS** | Regulated
Estate Agent
and Letting Agent

[dexters.co.uk](https://www.dexters.co.uk)