



Tudway Road, SE3

£300,000

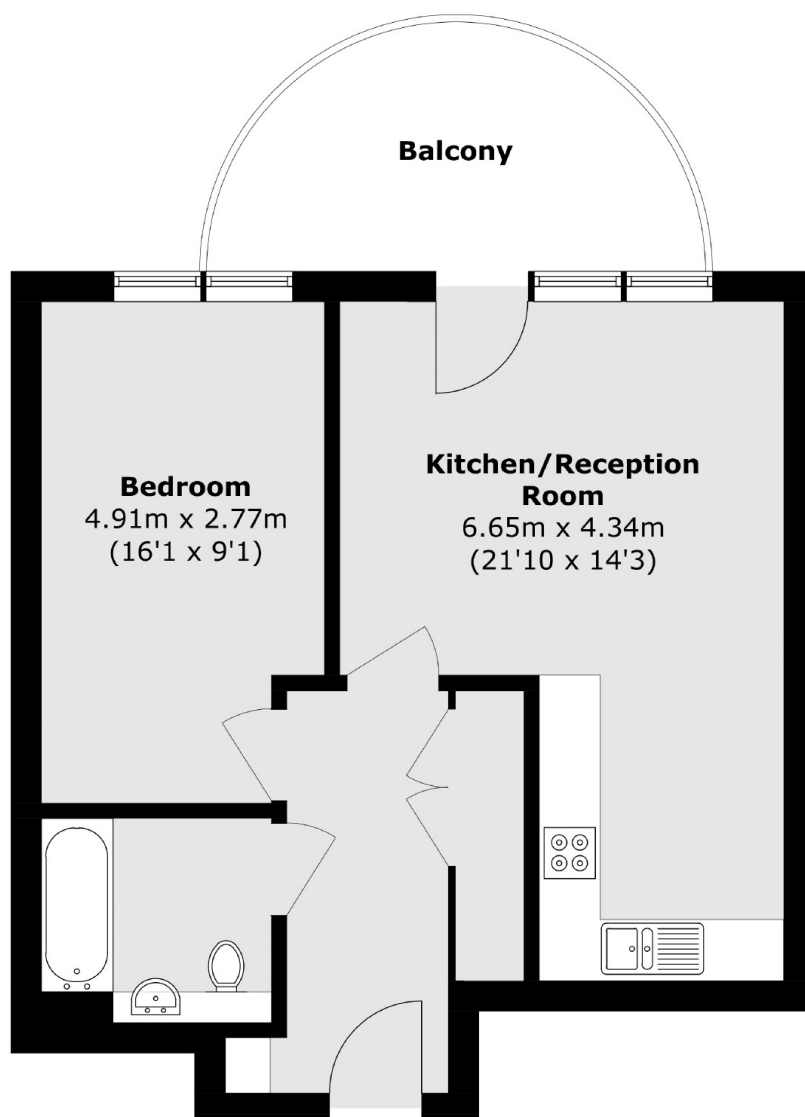
This modern third-floor one-bedroom apartment in Kidbrooke Village features an open-plan kitchen and living area, perfect for contemporary living. The property includes a private balcony, access to a 24-hour concierge, and a fully fitted gym. With superb local amenities and no upward chain, it's ideal for first-time buyers or investors looking for a move-in-ready home.

Kidbrooke Village is a vibrant, modern development offering stylish homes and excellent transport links, including easy access to Central London. With a range of on-site amenities, parks, and good schools, it's a perfect location for families and professionals alike. The area's ongoing regeneration makes it an increasingly desirable spot for those seeking a balanced urban and green lifestyle.

Features

- No Upward Chain
- One Double Bedroom
- Third Floor
- 24hr Concierge
- Access To Fully Fitted Gym
- Superb Transport Links

Tudway Road,
London, SE3



Total area (approx.): 51.2 sq. m (551.1 sq. ft)

Balcony area (approx.): 9.4 sq. m (101.2 sq. ft)

Dexters

Lee
430-432 Lee High Road
Lee
London
Sales
020 8815 2210

Energy Rating: B. We aim to make our particulars both accurate and reliable. However they are not guaranteed; nor do they form part of an offer or contract. If you require clarification on any points then please contact us, especially if you're traveling some distance to view. Please note that appliances and heating systems have not been tested and therefore no warranties can be given as to their good working order.

 **RICS** | Regulated
Estate Agent
and Letting Agent

dexters.co.uk