



Leyland Road, SE12

£425,000

Discover this delightful two-bedroom garden flat located on the desirable Leyland Road in Lee. Offering a perfect blend of comfort and convenience, this home is ideal for anyone looking for a serene living space with access to communal gardens.

Comprising of an entrance hallway, lounge, kitchen, utility room, two double bedrooms, shower room and separate bathroom.

This charming garden flat is perfect for first-time buyers or those looking to downsize without compromising on outdoor space. Schedule a viewing today and experience all this wonderful home has to offer!

Features

Beautiful Garden Flat
Two Double Bedrooms
Off Road Parking
Communal Garden
Well Presented Throughout
Great Transport Links

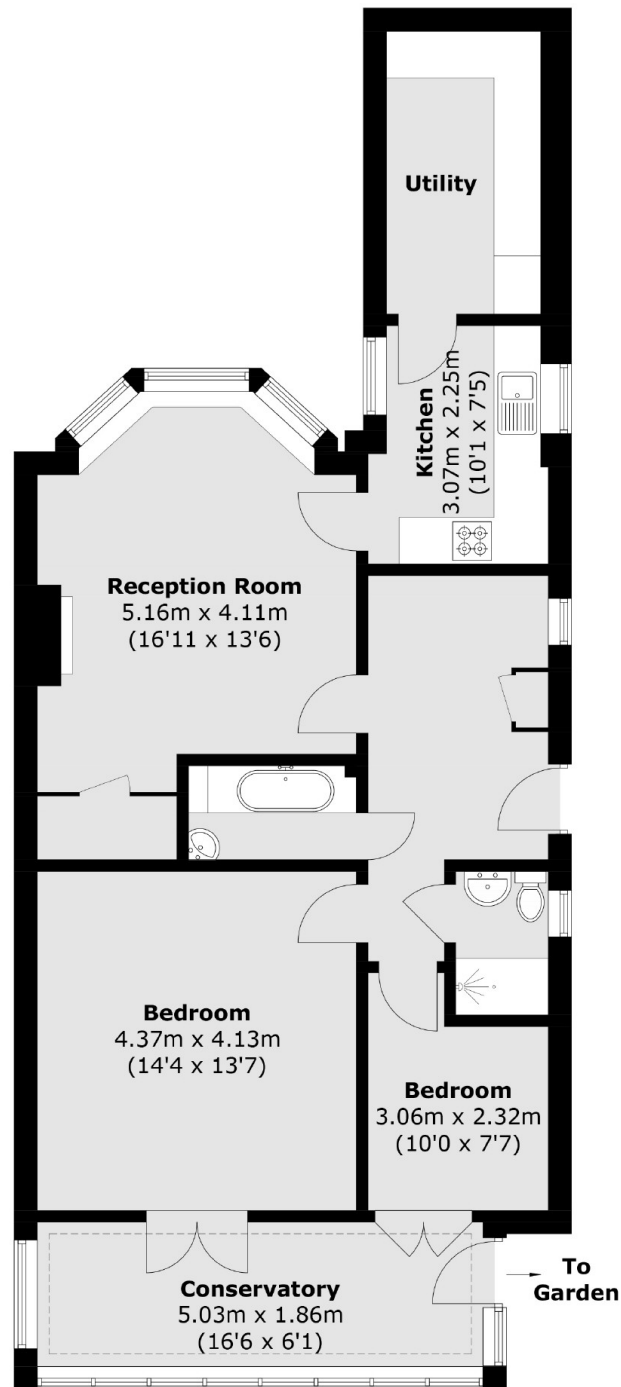


Leyland Road, SE12

The area offers a variety of local shops, cafes, and restaurants, ensuring you have everything you need right at your doorstep. From independent boutiques to well-known chains, there's something for everyone. Overall, Leyland Road in Lee combines the charm of suburban living with the convenience of urban amenities, making it an ideal location for both families and professionals alike.



Leyland Road,
London, SE12



Total area (approx.): 88.1 sq. m (948.3 sq. ft)

Dexters

Lee
430-432 Lee High Road
Lee
London
Sales
020 8815 2210

Energy Rating: C. We aim to make our particulars both accurate and reliable. However they are not guaranteed; nor do they form part of an offer or contract. If you require clarification on any points then please contact us, especially if you're traveling some distance to view. Please note that appliances and heating systems have not been tested and therefore no warranties can be given as to their good working order.

 **RICS** | Regulated
Estate Agent
and Letting Agent

[dexters.co.uk](https://www.dexters.co.uk)