



Ottley Drive, SE3

£450,000

This stylish and spacious two-bedroom apartment, located within the sought-after Kidbrooke Village development, boasts a large private balcony. Situated on the third floor (with lift access), the property features a bright and airy reception room with expansive windows, offering direct access to the generous balcony. The open-plan layout flows seamlessly into a contemporary kitchen, complete with integrated appliances. There are two sizable double bedrooms, a modern family bathroom, and a large utility cupboard, plus an additional storage/coat cupboard. Additional highlights include beautifully maintained communal gardens and the convenience of a 24-hour concierge service and residents gym access.

Features

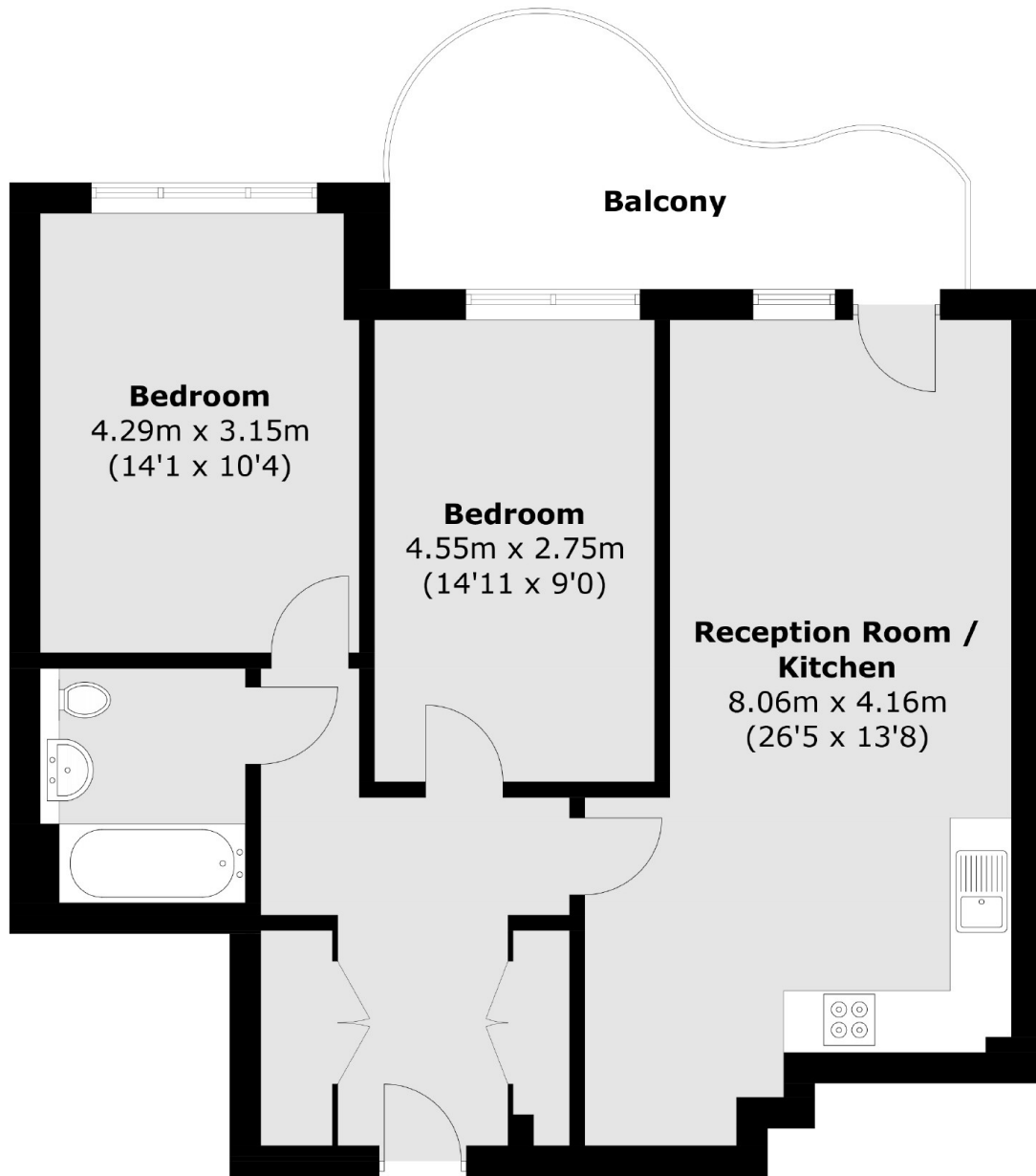
- Third Floor Apartment
- Two Double Bedrooms
- Large Open Plan Living Space
- Sizeable Balcony
- 24 Hour Concierge
- Residents Gym Access



Ottley Drive, SE3



Ottley Drive,
London, SE3



Total area (approx.): 72.5 sq. m (780.4 sq. ft)
Balcony: 10.9 sq. m (117.3 sq. ft)

Dexters

Lee
430-432 Lee High Road
Lee
London
Sales
020 8815 2210

Energy Rating: B. We aim to make our particulars both accurate and reliable. However they are not guaranteed; nor do they form part of an offer or contract. If you require clarification on any points then please contact us, especially if you're traveling some distance to view. Please note that appliances and heating systems have not been tested and therefore no warranties can be given as to their good working order.

 **RICS** | Regulated
Estate Agent
and Letting Agent

dexters.co.uk