



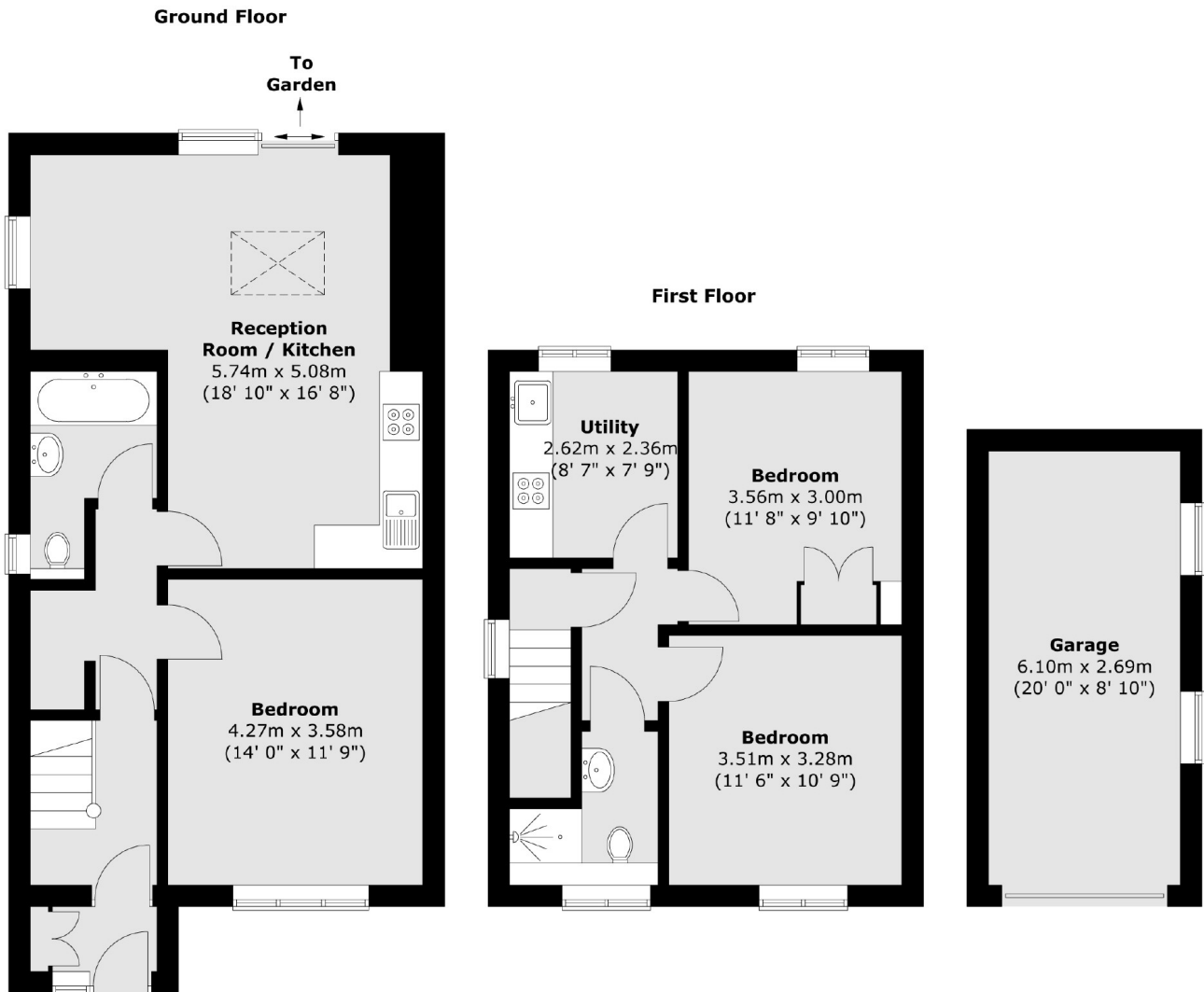
Edgeworth Road, SE9 £650,000

A beautiful three bedroom end of terrace property on Edgeworth Road, a popular residential location. Internally this property comprises of a porch, entrance hallway, front reception room (currently set up as a bedroom), modern bathroom with underfloor heating and finally an open plan kitchen/living space on the ground floor. Upstairs features three bedrooms with one currently being used as a kitchen and modern shower room. Externally there is off road parking for numerous vehicles via the front driveway, side access and a fully enclosed rear garden with garage.

Features

- Three Bedrooms
- Two Modern Bathrooms
- Open Plan Kitchen/Living Area
- Off Road Parking/Driveway
- Fully Renovated Throughout
- Enclosed Rear Garden

Edgeworth Road, London, SE9



Total area (approx.) : 97.5 sq. m (1049 sq. ft)
Total garage area (approx.) : 16.4 sq. m (177 sq. ft)