



## Le May Avenue, SE12

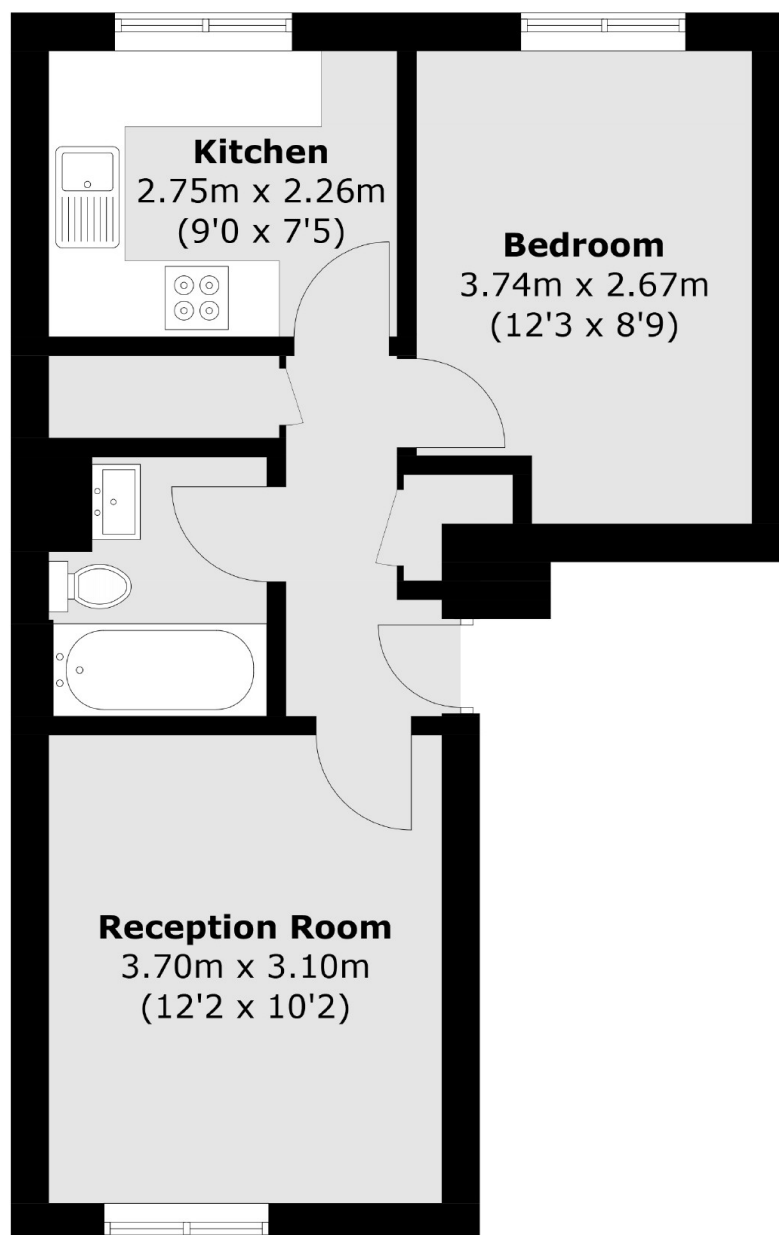
£275,000

Attention first time buyers or investors. This one bedroom first floor flat is available with no upward chain. Internally benefitting from a modern refitted kitchen, spacious lounge, double bedroom and bathroom. Externally there is allocated gated parking to the rear.

### Features

First Floor Flat  
Double Bedroom  
Modern Refitted Kitchen  
Reception Room  
Allocated Parking  
No Chain

Le May Avenue,  
London, SE12



Total area (approx.): 37.8 sq. m (406.9 sq. ft)

**Dexters**

Lee  
430-432 Lee High Road  
Lee  
London  
Sales  
020 8815 2210

Energy Rating: . We aim to make our particulars both accurate and reliable. However they are not guaranteed; nor do they form part of an offer or contract. If you require clarification on any points then please contact us, especially if you're traveling some distance to view. Please note that appliances and heating systems have not been tested and therefore no warranties can be given as to their good working order.

 **RICS** | Regulated  
Estate Agent  
and Letting Agent

dexters.co.uk