



Northbrook Road, SE13

£450,000

*** GUIDE PRICE £450,000 - £500,000 ***

If you are looking for luxury then look no further. This fully renovated two bedroom hall floor level flat has a secure communal entrance and is fitted to an extremely high standard throughout. Internally comprising of an entrance hallway with large storage cupboard, spacious well equipped newly fitted kitchen/living space with high end integrated appliances including dishwasher, two double bedrooms with Ensuite shower room to main and a modern family bathroom. Externally there is a large landscaped communal garden ideal for entertaining guests or making the most of English summers. Benefitting from a 999 year lease and no upward chain. These properties are ready to go.

Features

Fully Renovated Apartment
Two Double Bedrooms
En-suite and Bathroom
Newly Fitted Kitchen
New Lease 999 years
Chain Free

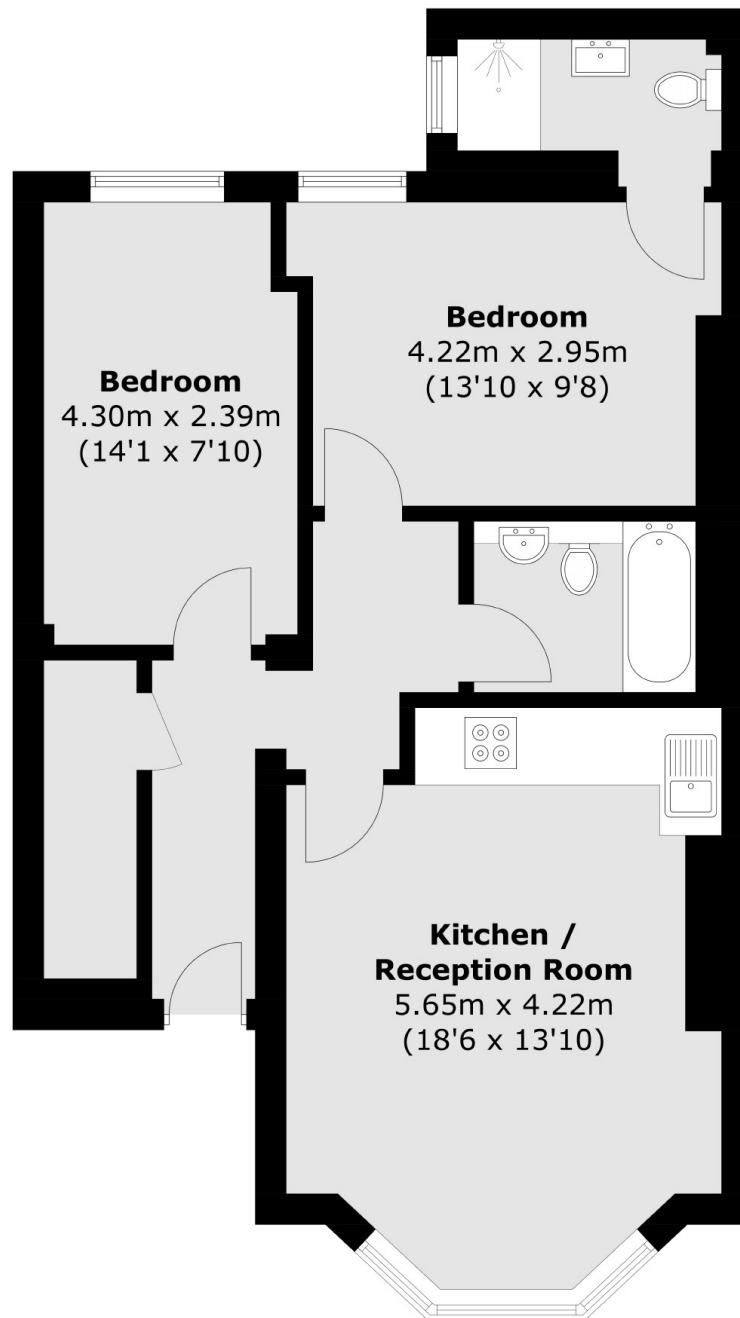


Northbrook Road, SE13

Northbrook Road is a fantastic location very close to Manor House Gardens. Hither Green Station is a six-minute walk through Manor Park, an entrance to which is at the end of the street. Adjacent shops include a Sainsbury's Local, acclaimed florist and café You Don't Bring Me Flowers, Italian restaurant and pizzeria Sapore Vero, craft beer and chocolate shop Park Fever and gastropub The Station Hotel. Travel time to London Bridge is 11 minutes from Hither Green Station, which also services Charing Cross, London Cannon Street, Waterloo East and Victoria. Lewisham Station (DLR) is a 17-minute walk, while Blackheath is a 25-minute walk. There are several Ofsted outstanding primary schools close by.



Northbrook Road,
London, SE13



Total area (approx.): 65.1 sq. m (700.7 sq. ft)

Dexters

Lee
430-432 Lee High Road
Lee
London
Sales
020 8815 2210

Energy Rating: B. We aim to make our particulars both accurate and reliable. However they are not guaranteed; nor do they form part of an offer or contract. If you require clarification on any points then please contact us, especially if you're traveling some distance to view. Please note that appliances and heating systems have not been tested and therefore no warranties can be given as to their good working order.

 **RICS** | Regulated
Estate Agent
and Letting Agent

dexters.co.uk