



Harting Road, SE9

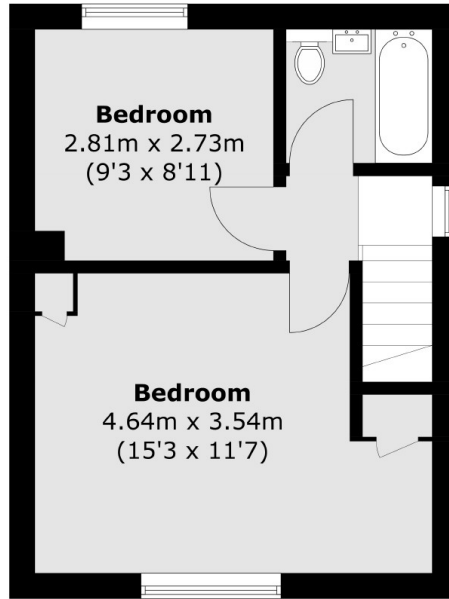
£400,000

Lovely two bedroom semi detached home offered with no upward chain. Internally this property comprises of an entrance hallway, spacious lounge, kitchen and guest WC on the ground floor. Upstairs you will find two double bedrooms and family bathroom. Externally there is off road parking to the front and a fully enclosed garden to the rear.

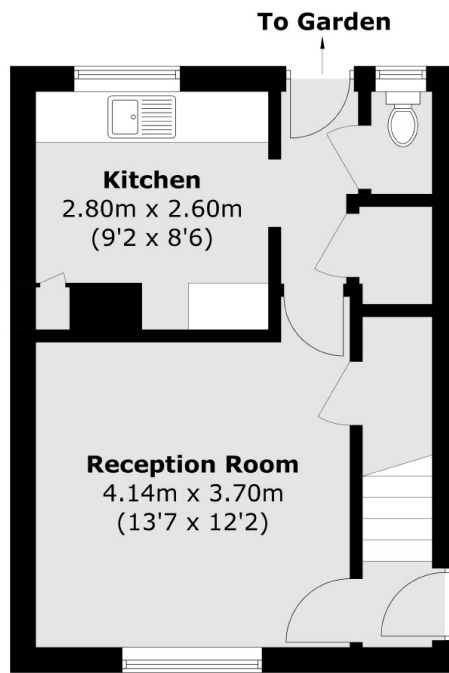
Features

- No Upward Chain
- Semi Detached
- Two Double Bedrooms
- Off Street Parking
- Enclosed Rear Garden
- Guest WC

Harting Road,
London, SE9



First Floor



Ground Floor

Total area (approx.): 60.9 sq. m (655.5 sq. ft)