



Court Farm Road, SE9

£270,000

* Buyer incentives available worth up to £1,000 (Subject to terms) *

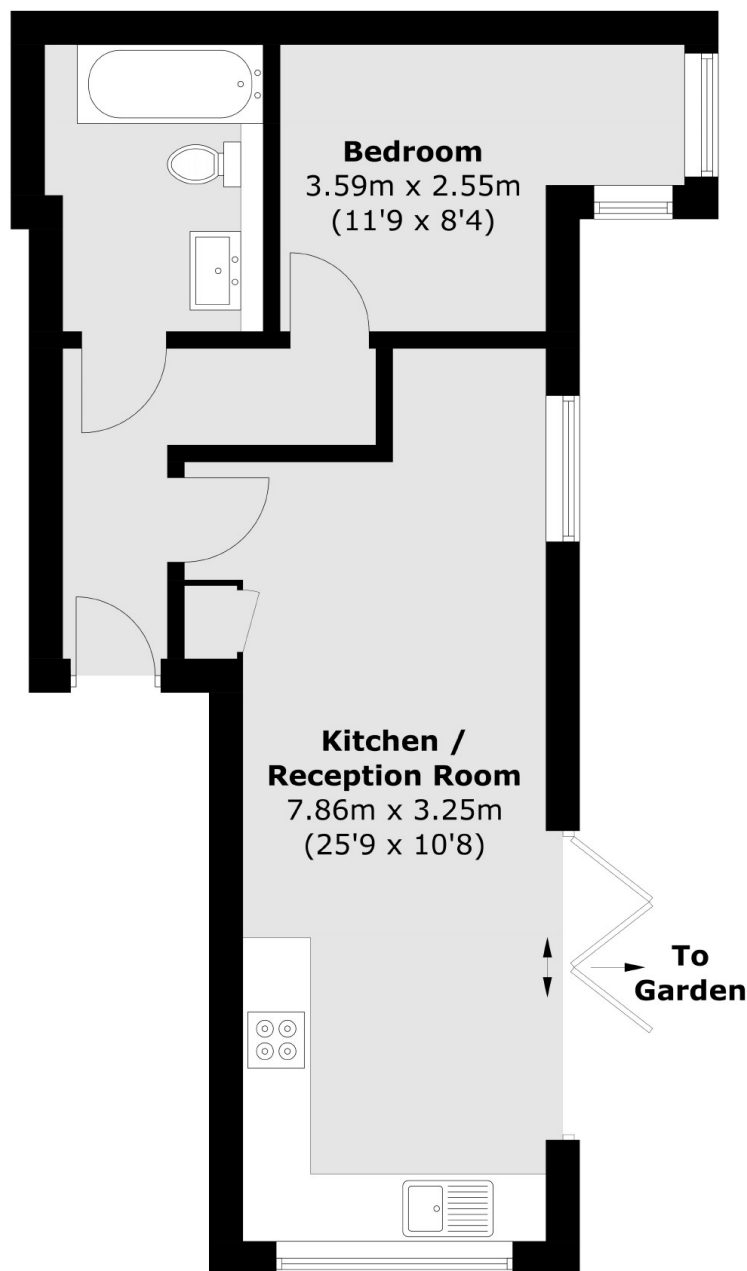
A one double-bedroom apartment, with a private garden, allocated parking space and a share of the freehold. There is a high specification throughout including underfloor heating, bi-folding doors and energy-efficient heating.

Court Farm Road is well-connected in terms of transportation. Eltham Station is the closest railway station, offering regular services to London Cannon Street, London Charing Cross, and other central London destinations.

Features

- One Bedroom
- Italian Tiles
- Energy Efficient
- Private Garden
- Allocated Parking Space
- Communal Gardens

Court Farm Road, Eltham, SE9



Total area (approx.): 39.6 sq. m (426.2 sq. ft)

Dexters

Lee
430-432 Lee High Road
Lee
London
Sales
020 8815 2210

Energy Rating: - We aim to make our particulars both accurate and reliable. However they are not guaranteed; nor do they form part of an offer or contract. If you require clarification on any points then please contact us, especially if you're traveling some distance to view. Please note that appliances and heating systems have not been tested and therefore no warranties can be given as to their good working order.

 **RICS** | Regulated
Estate Agent
and Letting Agent

dexters.co.uk