



Court Farm Road, SE9

£299,950

* Buyer incentives available worth up to £2,500 (Subject to terms) *

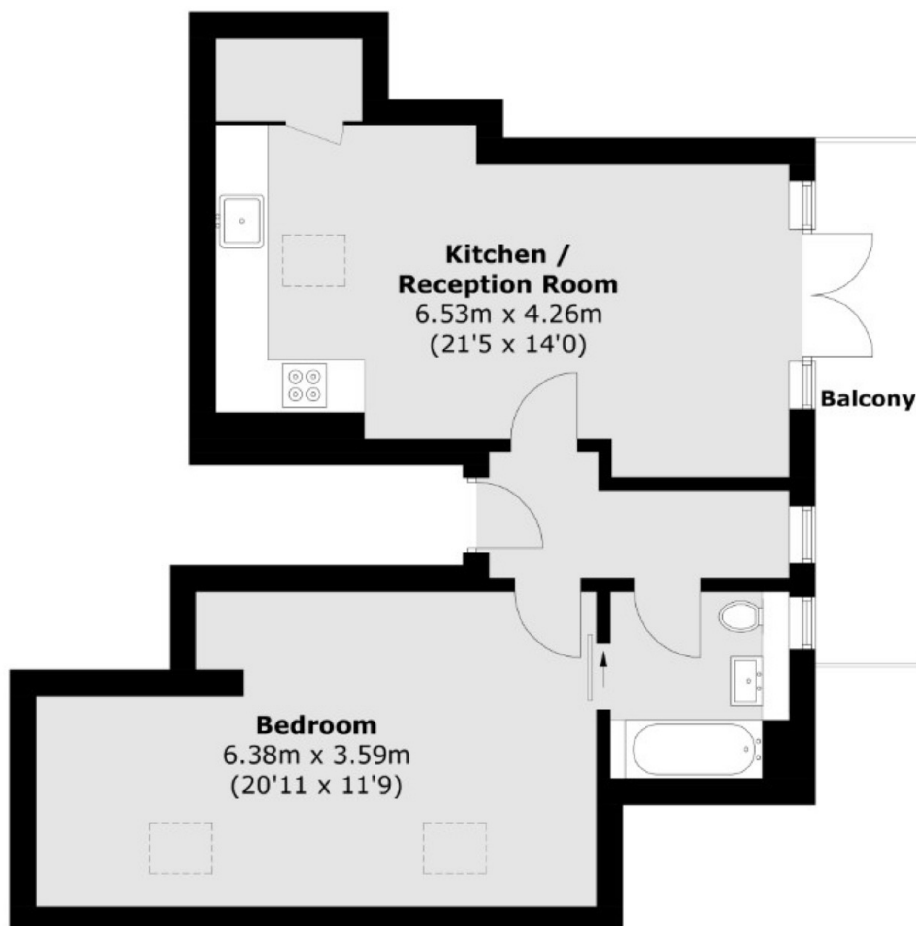
A one double-bedroom apartment, with a west-facing roof terrace and allocated parking space. There is a high-specification, energy-efficient design throughout including a jack-and-jill bathroom.

Court Farm Road is well-connected in terms of transportation. Eltham Station is the closest railway station, offering regular services to London Cannon Street, London Charing Cross, and other central London destinations.

Features

- One Bedroom
- West-Facing Terrace
- Allocated parking Space
- Large Spacious Layout
- Folding Patio Doors
- Storage Cupboard

Court Farm Road, Eltham, SE9



Total area (approx.): 55.1 sq. m (593.1 sq. ft)
Balcony area (approx.): 7.2 sq. m (77.5 sq. ft)