



Riefeld Road, SE9

£4,300 Per calendar month

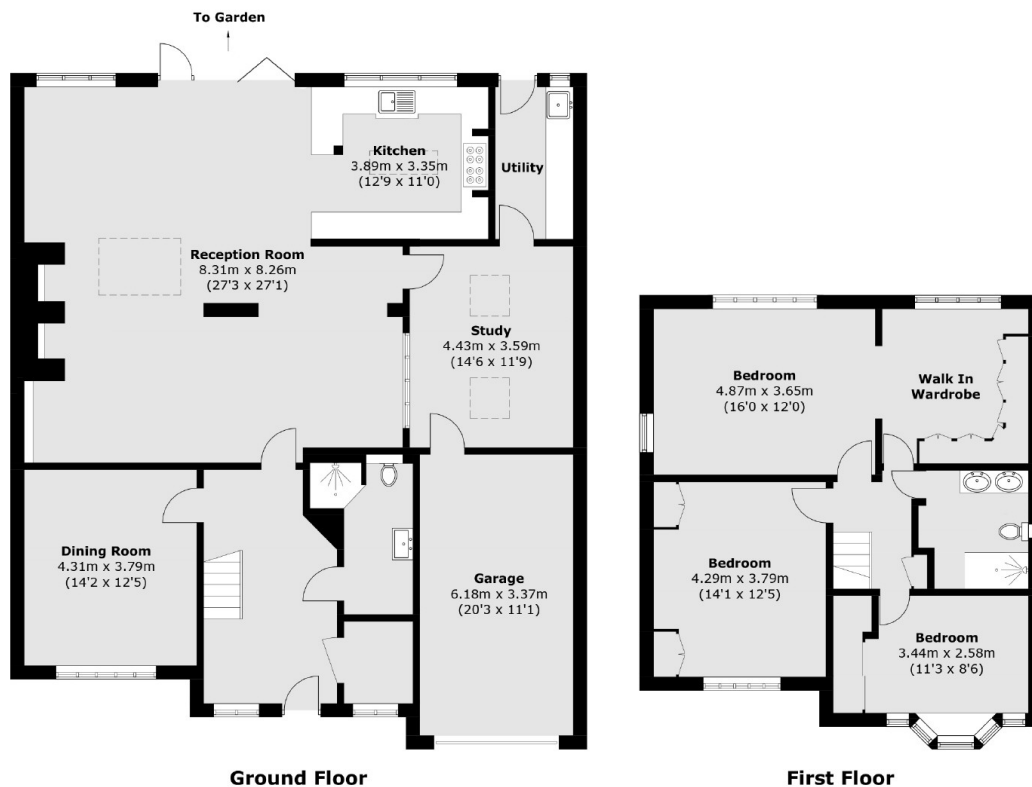
An impressive detached house situated in the very sought after Eltham Heights. Comprising 3/4 bedrooms, a spacious open plan reception leading on to a beautifully landscaped garden that backs onto Eltham Warren Golf Course. A modern fitted kitchen, separate dining area and two family bathrooms. This property further benefits from underfloor heating, garage and a large drive to accommodate multiple cars.

Only 0.2 miles from Falconwood Train station, for regular train services to Central London. Within close proximity of a number of prestigious schools.

Features

- Detached House
- 4 Bedrooms
- Over 2000sqft
- Underfloor Heating
- Off-Street Parking
- Private Garden

Riefield Road, London, SE9



Total area (approx.): 233.5 sq. m (2513.3 sq. ft)
(Including Garage)