



Lenham Road, SE12

£475,000

A beautiful period conversion flat on Lenham Road. The internal accommodation comprises of a spacious and airy living room with feature fireplace, a modern kitchen with stone worktops, integrated appliances and breakfast area, two double bedrooms, modern bathroom and separate WC. Externally there is a private rear garden with decked area, patio, lawn and various flower beds.

This property is being sold chain free and share of freehold.

Lenham Road is a fantastic location very close to Manor house gardens, Lee, Hither Green, Lewisham stations and just a short walk into Blackheath Village and Station. Travel times to London Bridge are 7 minutes

Features

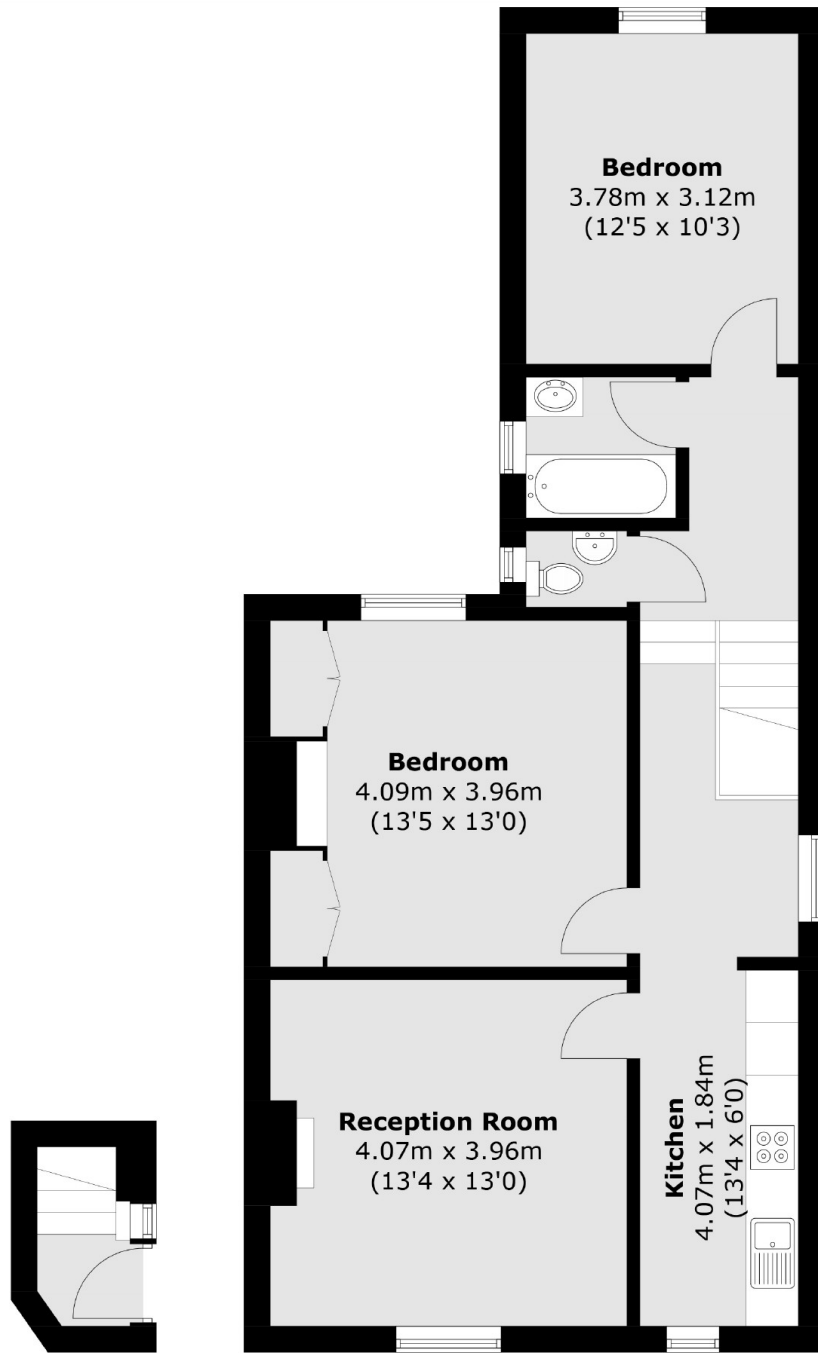
- Period Conversion
- First Floor Apartment
- Two Double Bedrooms
- Spacious Living Room
- Share of Freehold
- Private Rear Garden



Lenham Road, SE12



Lenham Road,
London, SE12



Ground Floor

First Floor

Total area (approx.): 71.5 sq. m (769.6 sq. ft)

Dexters

Lee
430-432 Lee High Road
Lee
London
Sales
020 8815 2210

Energy Rating: . We aim to make our particulars both accurate and reliable. However they are not guaranteed; nor do they form part of an offer or contract. If you require clarification on any points then please contact us, especially if you're traveling some distance to view. Please note that appliances and heating systems have not been tested and therefore no warranties can be given as to their good working order.

 **RICS** | Regulated
Estate Agent
and Letting Agent

dexters.co.uk