



## Lenham Road, SE12

£525,000

A beautiful period conversion flat on Lenham Road. The internal accommodation comprises of a spacious and airy living room with feature fireplace, a modern kitchen with stone worktops, integrated appliances and breakfast area, two double bedrooms, modern bathroom and separate WC. Externally there is a private rear garden with decked area, patio, lawn and various flower beds.

This property is being sold chain free and share of freehold.

Lenham Road is a fantastic location very close to Manor house gardens, Lee, Hither Green, Lewisham stations and just a short walk into Blackheath Village and Station. Travel times to London Bridge are 7 minutes

### Features

Period Conversion  
First Floor Apartment  
Two Double Bedrooms  
Spacious Living Room  
Share of Freehold  
Private Rear Garden

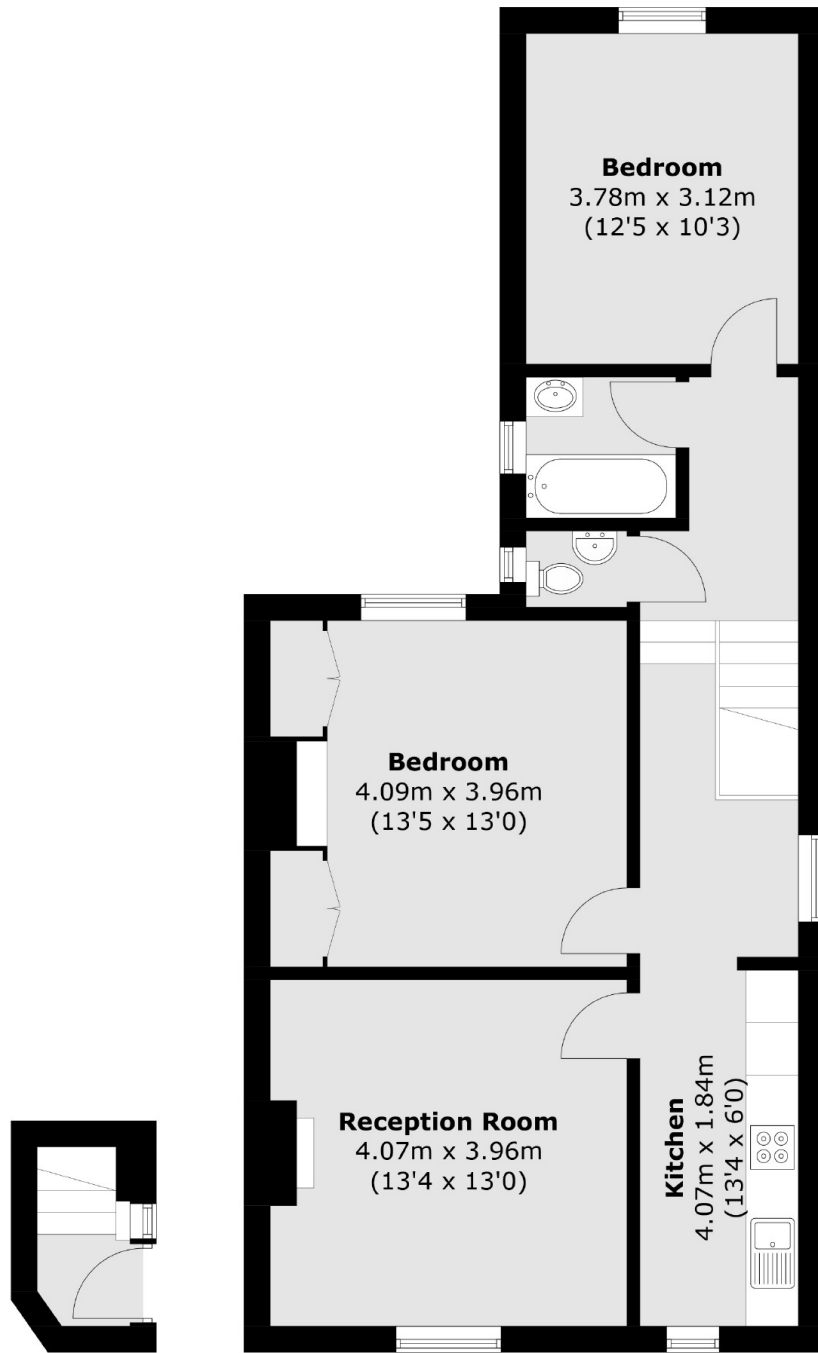


Lenham Road, SE12





Lenham Road,  
London, SE12



**Ground Floor**

**First Floor**

Total area (approx.): 71.5 sq. m (769.6 sq. ft)

**Dexters**

Lee  
430-432 Lee High Road  
Lee  
London  
Sales  
020 8815 2210

Energy Rating: . We aim to make our particulars both accurate and reliable. However they are not guaranteed; nor do they form part of an offer or contract. If you require clarification on any points then please contact us, especially if you're traveling some distance to view. Please note that appliances and heating systems have not been tested and therefore no warranties can be given as to their good working order.

 **RICS** | Regulated  
Estate Agent  
and Letting Agent

dexters.co.uk