



Le May Avenue, SE12

£300,000

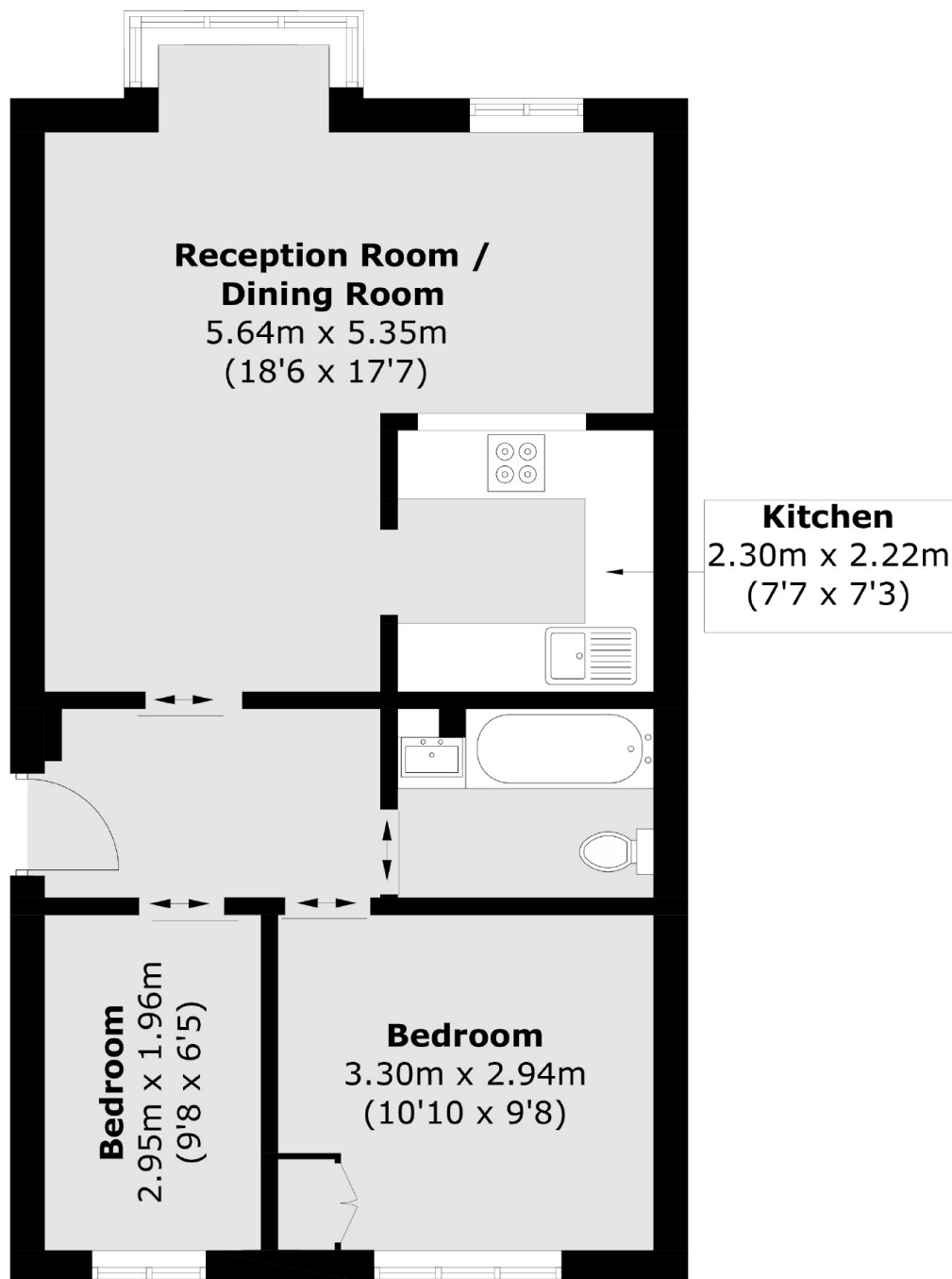
*** Guide Price £300,000 - £325,000 *** Lovely two bedroom second floor flat on the popular Holm Court. Renovated by its current owners to a high standard this property briefly comprises of a entrance hallway, spacious lounge/diner, kitchen, two well proportioned bedrooms and a modern bathroom. Double glazed throughout. Externally there is secure allocated off road parking. Being offered with no upward chain. Ideal for first time buyers/ investors.

The property is located 0.2 miles from Grove park Station which quickly gets you into Central London, the property is also walking distance to all amenities in Grove Park.

Features

- No Upward Chain
- Next to Grove Park Station
- Two Bedrooms
- High Standard Throughout
- Allocated Parking
- Long Lease

Le May Avenue, London, SE12



Total area (approx.): 53.9 sq. m (580.2 sq. ft)