



Lee High Road, SE12

£350,000

A beautiful and spacious one bedroom ground floor apartment on Lee High Road. Set within a Grade II listed converted Police Station. The property comprises of an entrance hallway with storage cupboard, large open plan living area with well equipped kitchen, spacious double bedroom and modern bathroom. Benefitting from high ceilings, floor to ceiling sash windows, wood flooring and gas fired central heating. Well presented throughout. Externally there is secure gated off road parking and communal entrance with intercom system.

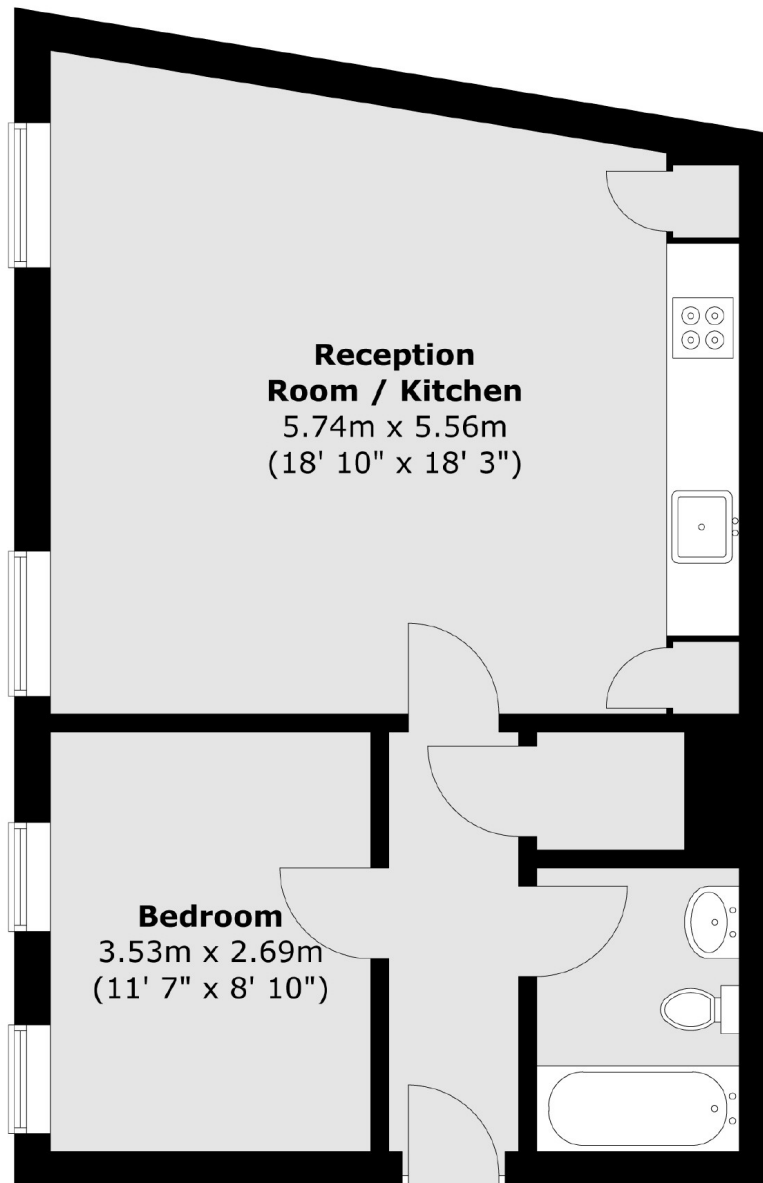
Located between Blackheath Village, (0.54 miles) and its array of bars, shops and restaurants and Lee Mainline Station, (0.47 miles). Lewisham Mainline Station and DLR (with fast links to Canary Wharf and Central London) is a 10 minute bus ride away. The popular open spaces of Blackheath Common, Greenwich Park and Manor House Gardens are within a short walk.

Features

Modern Ground Floor Flat
One Double Bedroom
Spacious Open Plan Living
Secure Gated Parking
No Upward Chain
High Standard Throughout

Lee High Road,
London, SE12

Ground Floor



Total area (approx.) : 51.1 sq. m (550 sq. ft)