



## Ottley Drive, SE3

£550,000

A fantastic opportunity to purchase this three bedroom first floor modern apartment in Maltby House, part of the exciting Kidbrooke village development. Internally this modern property boasts an entrance hallway, open plan kitchen/living area, three bedrooms with ensuite bathroom to main and separate shower room. Externally there is a private patio area, perfect for alfresco dining.

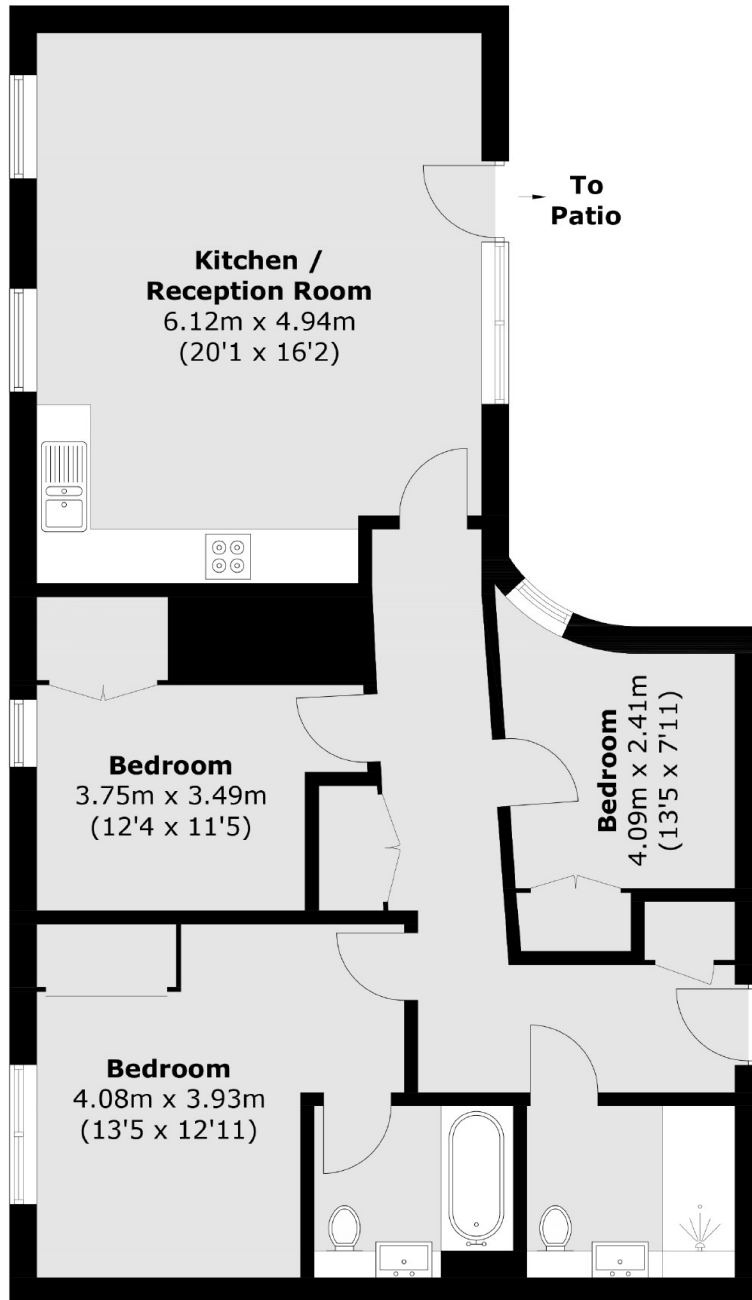
Security is key with this apartment with secure communal entrance, modern foyer, lift access and on site concierge. Also benefitting from right to park.

Kidbrooke Village, where Maltby House is situated, is a vibrant and up-and-coming area. It offers a selection of shops, cafes, and restaurants, providing convenience and entertainment. The development also benefits from excellent transport links, with Kidbrooke train station nearby offering a 15 minute commute to London Bridge, allowing for easy access to Central London and other parts of the city.

### Features

- No Upward Chain
- Modern Development
- Three Bedrooms
- Bathroom & Shower Room
- Private Patio Area
- Right To Park

Ottley Drive,  
London, SE3



## First Floor

Total area (approx.): 88.6 sq. m (953.7 sq. ft)

**Dexters**

Lee  
430-432 Lee High Road  
Lee  
London  
Sales  
020 8815 2210

Energy Rating: B. We aim to make our particulars both accurate and reliable. However they are not guaranteed; nor do they form part of an offer or contract. If you require clarification on any points then please contact us, especially if you're traveling some distance to view. Please note that appliances and heating systems have not been tested and therefore no warranties can be given as to their good working order.

 **RICS** | Regulated  
Estate Agent  
and Letting Agent

dexters.co.uk