



St. Mildreds Road, SE12
£799,999

Dexters



St. Mildreds Road, SE12

An opportunity to acquire this fantastic five bedroom, 1930's, semi detached house on St. Mildreds Road. The property benefits from a front and rear garden, five double bedrooms, three bathrooms with an additional WC, rear parking for two cars, brand new kitchen and bathroom fixtures throughout, and outhouse to the rear. With a south facing garden backing on a beautiful set of allotments, this well located property comes ready to move in. After a recent renovation bringing the property up to a top standard,

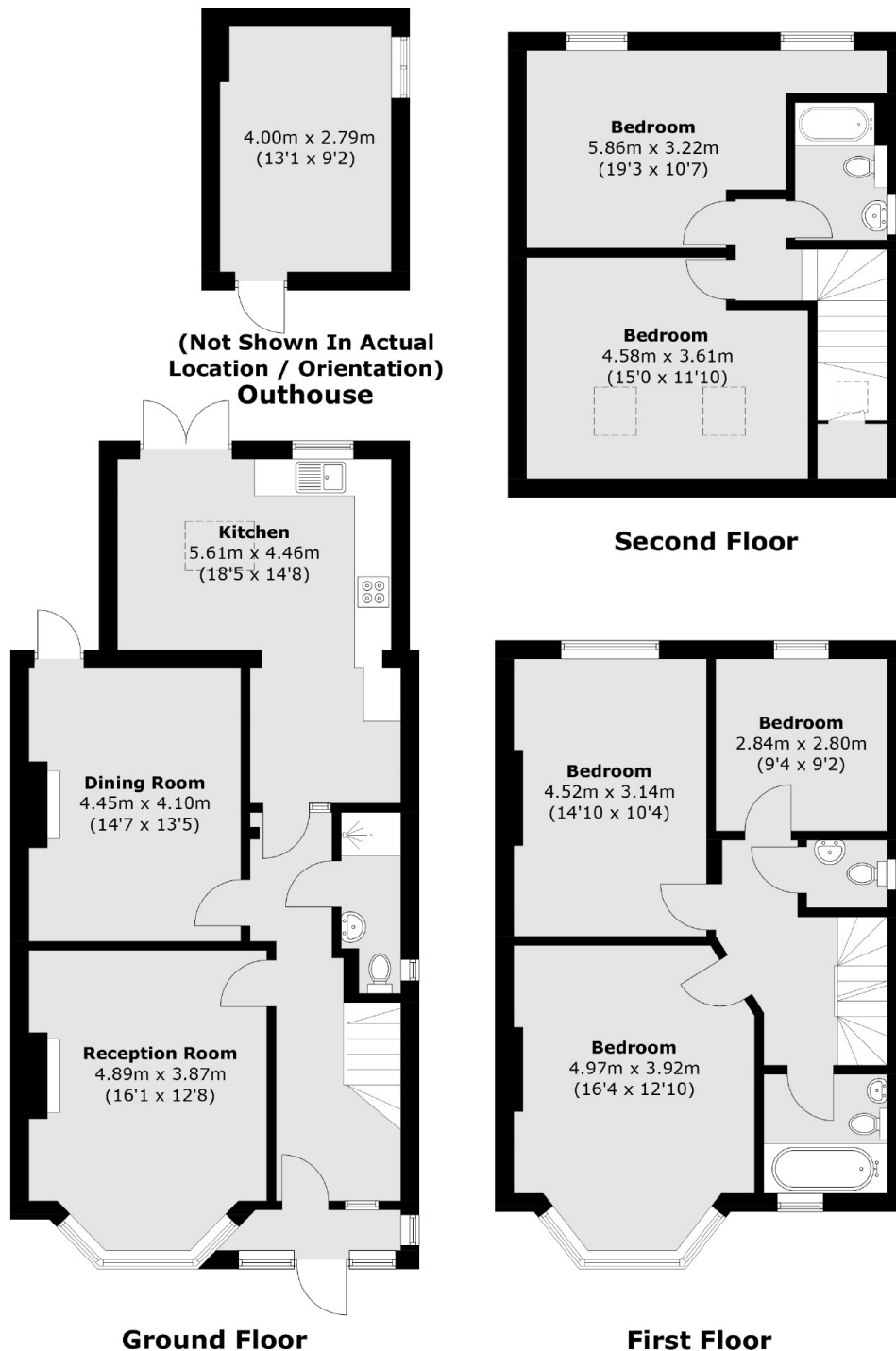
This property is ideal for a family looking to move into the sought after area of Lee/ Hither Green. Allying within the catchment of sought-after primary schools. Commuter links are also available to a choice of London Stations, whether you need access to the City with trains to London Bridge, Blackfriars, and Cannon Street from Hither Green, Bellingham or the twin Catford Stations.

Features

- Recently Renovated
- South Facing Garden
- Semi Detached
- Off Street Parking
- Five Bedrooms
- Family Home



St. Mildreds Road, London, SE12



Total area (approx.): 168.2 sq. m (1,810.4 sq. ft)
Outouse: 11.3 sq. m (121.6 sq. ft)