



Willoughby Lane, BR1

£450,000

Enclosed within a woodland sits the picturesque Sundridge Park Mansions. A short train ride away from Central London and the perfect mix of countryside and city living. The historic property is moments away from Bromley town center with many amenities such as the Glades shopping centre and an array of local restaurants, bars, and leisure facilities. There are fantastic transport links with Sundridge Park Station 0.7 miles away and Bromley South Station 2.1 miles away both getting you into Central London within 21 minutes.

Features

- 21 Minutes from Central London
- One Double Bedroom
- Secure Gated Development
- Air Conditioning
- Underfloor Heating
- Grade I Listed
- Beautiful Landscaped Gardens
- Two Allocated Parking Spaces
- Private Patio/Terrace



Willoughby Lane, BR1

An idyllic one-bedroom apartment nestled within this Grade I listed country house. Modelled on a Renaissance temple, this property was designed in the 18th century by renowned architect John Nash, who also helped create the Royal Brighton Pavilion, Marble Arch and Buckingham Palace. Surrounded by beautiful grounds and gardens by sought-after landscape designer Humphry Repton, this 800 sq. Ft apartment is on the second floor and accessed via a lift. To the front, you will find a charming patio area. Inside is a large open living area with original beams, bespoke storage, and a stunning circular window overlooking the front courtyard. The kitchen, designed by Ladbury, has stone worktops/splashbacks, integral Siemens appliances (Oven, Hob, Dishwasher, Fridge/freezer, microwave oven), and Italian porcelain floor tiles. An internal hallway with a large storage room leads through to both the double bedroom with bespoke fitted wardrobes, and the luxury Villeroy & Boch bathroom incorporating a freestanding vanity sink with quartz worktop, heated towel rail, and shower over bath. Throughout are engineered oak flooring, underfloor heating, plantation shutters, and air conditioning. Externally, there are two fully-secure allocated parking spaces, along with plenty of visitor spaces. The communal areas are second to none with acres of Grade II listed private gardens, a croquet lawn, and private woodland trails. Security is also at the forefront with electric gates, intruder alarms, and a high-end intercom entry system that can be controlled from your smartphone.



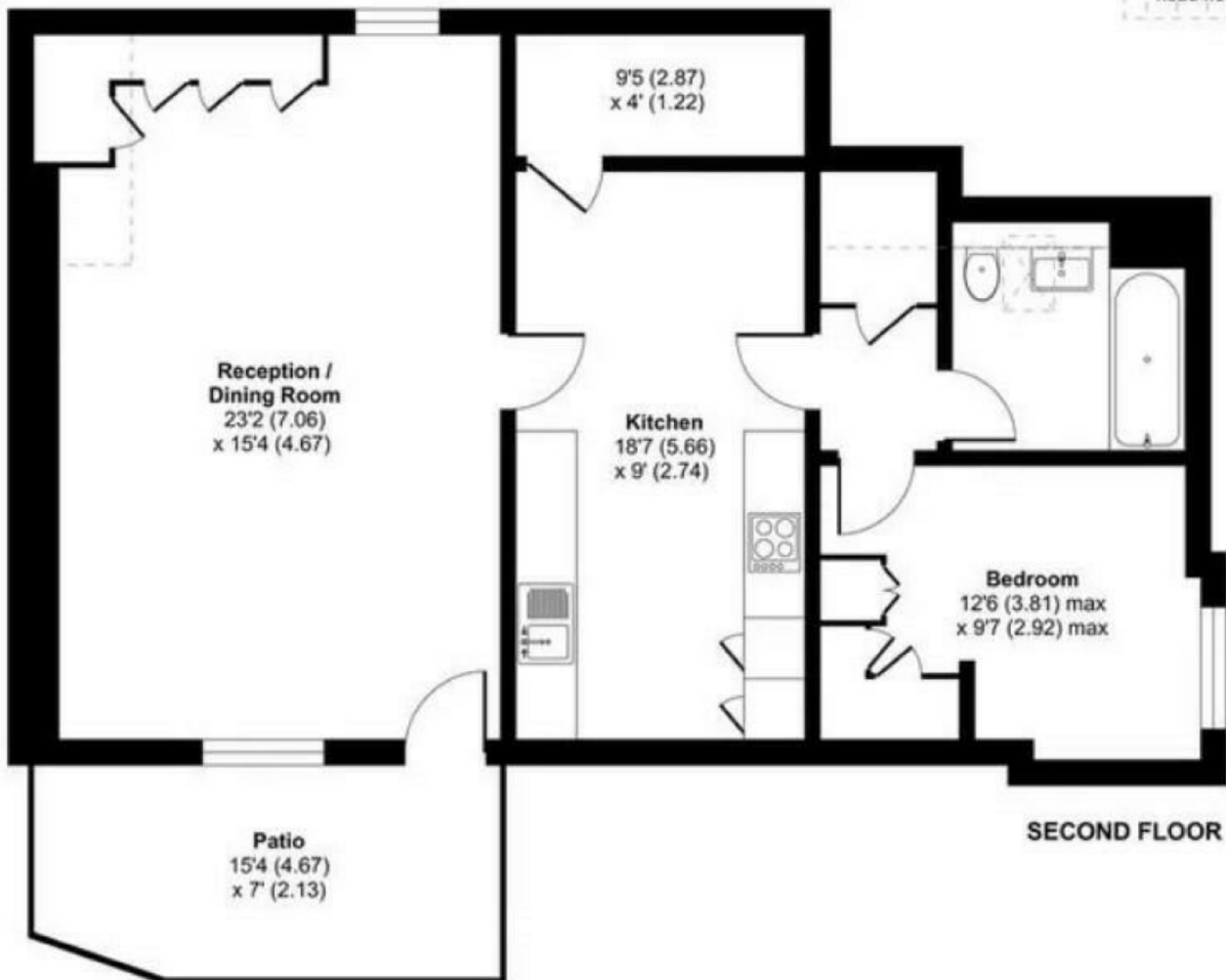
Willoughby Lane, Bromley, BR1



Approximate Area = 775 sq ft / 72 sq m
Limited Use Area(s) = 42 sq ft / 4 sq m
Total = 817 sq ft / 75.8 sq m

For identification only - Not to scale

Denotes restricted
head height



SECOND FLOOR