



## Leyland Road, SE12

£575,000

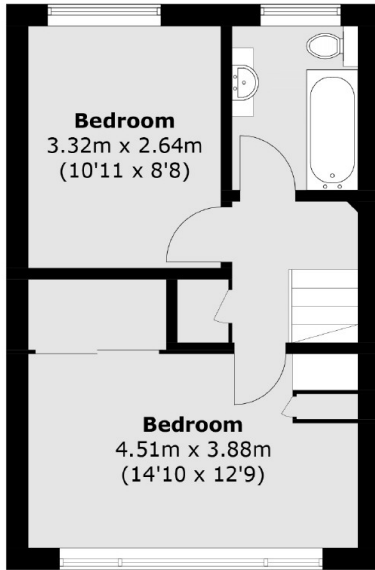
Well presented three/four bedroom, two bath town house which is situated along a sought after road in an ideal location for Lee Station. On the ground floor there is an entrance hall with built in clever closet storage, double bedroom, an additional room that can be used as a fourth bedroom, study or reception room and a shower room. On the first floor there is a large open plan living area and kitchen/diner and on the top floor there is a large master bedroom, further double bedroom and family bathroom with bath and overhead shower. This property further benefits from driveway parking a well kept private garden and views of the park opposite. Being sold with No upward chain.

Situated in a much sought after no through road, in an excellent location for shops, cafés and restaurants. Minutes from Lee station, Cofes independent school and close to Blackheath Village.

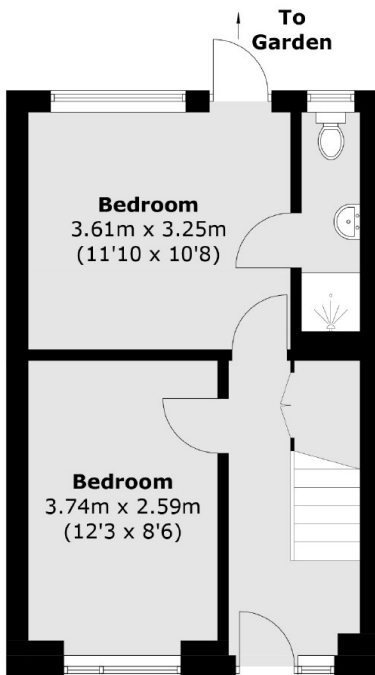
### Features

- Three Storey Town House
- Two Reception Rooms
- Three/Four Bedrooms
- Off Road Parking
- Private Rear Garden
- No Upward Chain
- Popular Location

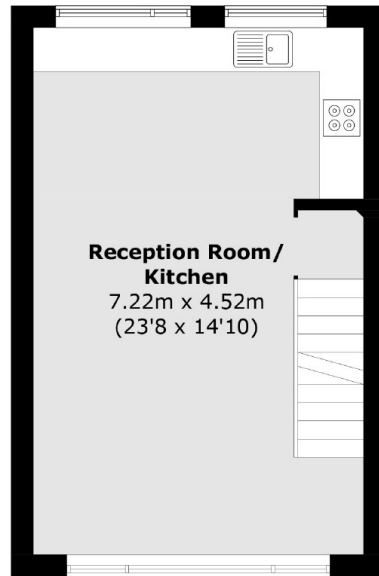
Leyland Road,  
London, SE12



**Second Floor**



**Ground Floor**



**First Floor**

Total area (approx.): 98.8 sq. m (1,063.5 sq. ft)