



St. Mildreds Road, SE12

£700,000

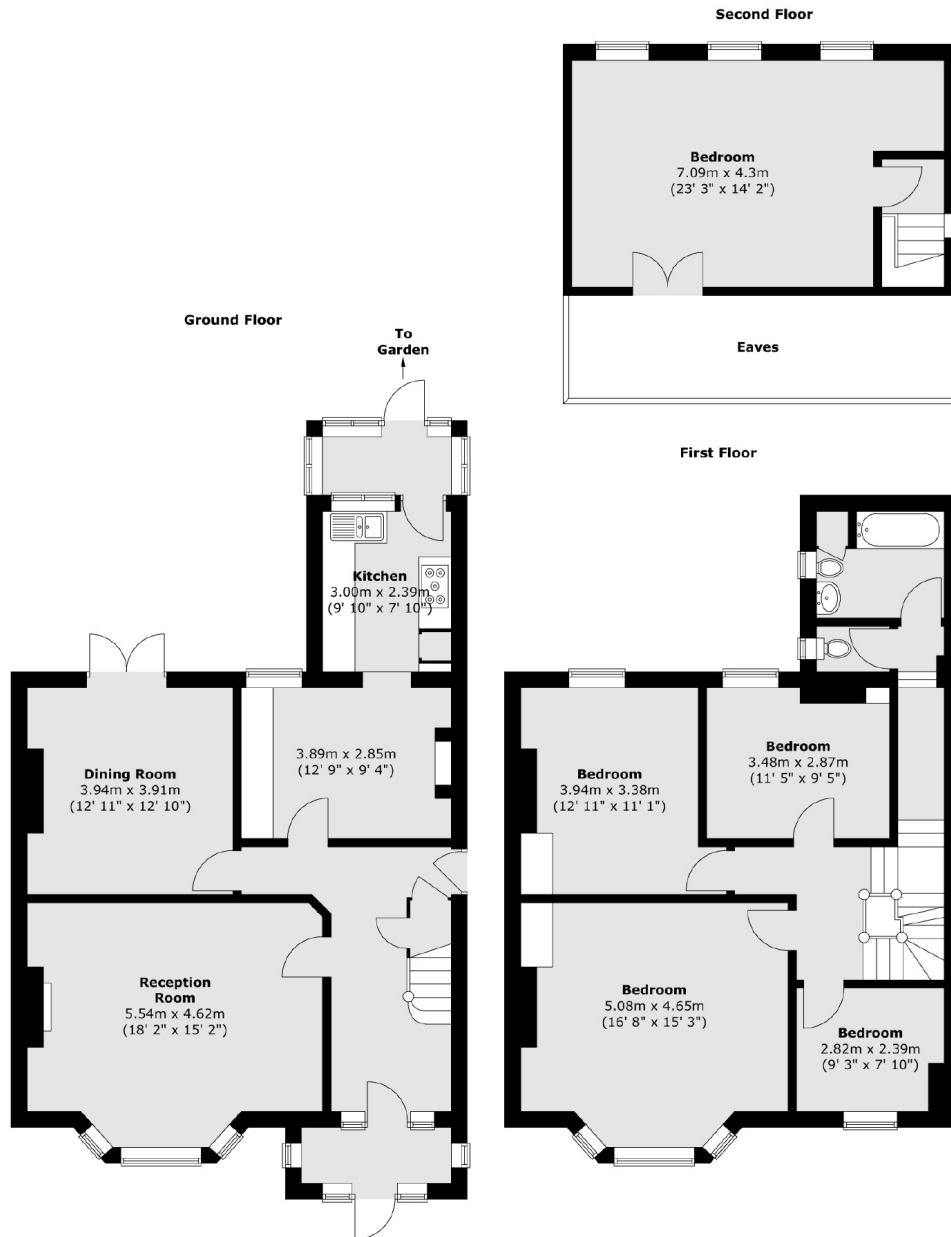
A great opportunity to purchase this five bedroom traditional mid terrace family home on St. Mildreds Road. In brief this property comprises of an entrance hallway, large front reception room, dining room, breakfast room and kitchen on the ground floor. The first floor features four bedrooms, family bathroom and separate WC. You will find the fifth bedroom on the second floor with access to the eaves storage. Externally there is off road parking to the front and a fully enclosed garden to the rear. This property is in need of modernisation and offers huge potential for the buyer to improve and extend (Subject to planning permission).

Lee train station, Colfes school and a variety of local shops, restaurants and bars are all within a short walk. The recently refurbished Lord Northbrook pub on Burnt Ash Road offers a varied selection of Ales and seasonal hot and cold food. Blackheath Village, Lewisham town centre and DLR are also easily accessible.

Features

Large Five Bedroom Home
Modernisation Needed
Potential to Extend (STPP)
Three Reception Room
Off Road Parking
Enclosed Rear Garden

St. Mildreds Road, London, SE12



Total area (approx.) : 188.1 sq. m (2025 sq. ft)