



Amblecote Road, SE12

£280,000

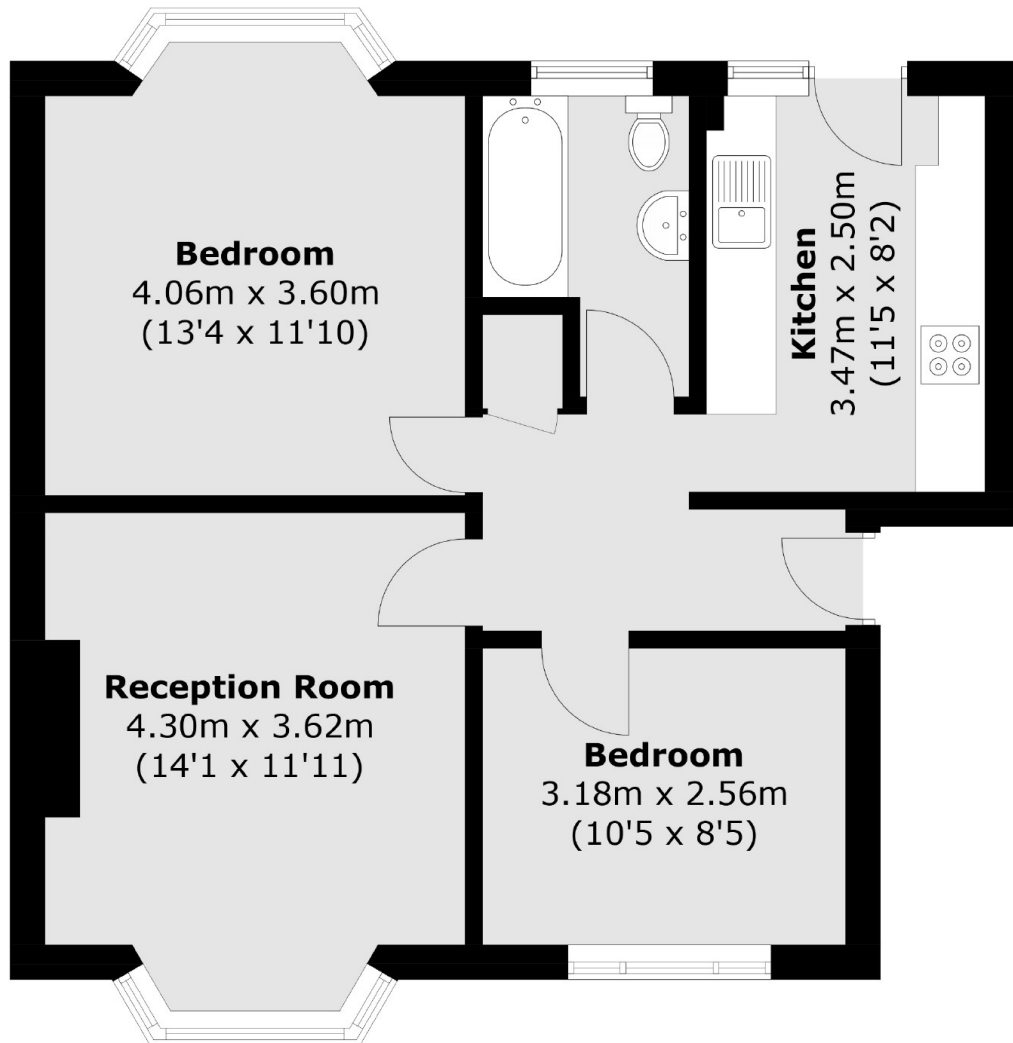
Attention first time buyers or Investors. This two bedroom second floor flat is available chain free. In brief this property comprises of an entrance hallway, Lounge, Kitchen, two double bedrooms and family bathroom. Externally there is a large communal gardens.

Amblecote Road is a short walk to all local amenities and Grove Park Station (0.3 miles), reputable schooling and supermarkets. Local parks are moments away such as Chinbrook Meadows and a range of Grove Park nature reserved areas and Blackheath Golf Club nearby.

Features

Ideal First Home or Investment
Second Floor Flat
No Upward Chain
Two Double Bedrooms
Short Walk To Grove Park
Station
Close Proximity To Local
Amenities

Amblecote Road,
London, SE12



Total area (approx.): 56.8 sq. m (611.3 sq. ft)