



Horncastle Road, SE12
£799,950

Dexters



Horncastle Road, SE12

Beautiful extended four bedroom end of terrace 1930's family home. In brief this superb property comprises of an entrance hallway, lounge, dining room, spacious open plan kitchen/diner, utility room and guest WC on the ground floor. The first floor features three double bedrooms, family bathroom and shower room. Finally on the second floor you will find a large main bedroom, shower room and walk in wardrobe. Externally you have off road parking to the front via the driveway. To the rear is a full enclosed landscaped garden with large patio/decked area, artificial lawn and huge summerhouse.

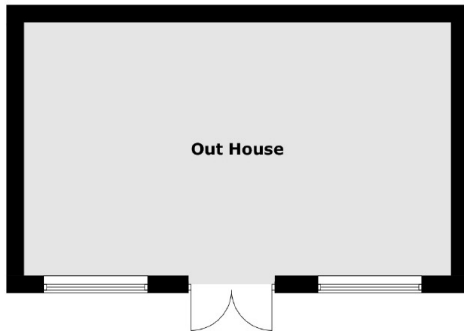
Lee train station, Colfes school and a variety of local shops, restaurants and bars are all within a short walk. The recently refurbished Lord Northbrook pub on Burnt Ash Road offers a varied selection of Ales and seasonal hot and cold food. Blackheath Village, Lewisham Town centre and DLR are also easily accessible.

Features

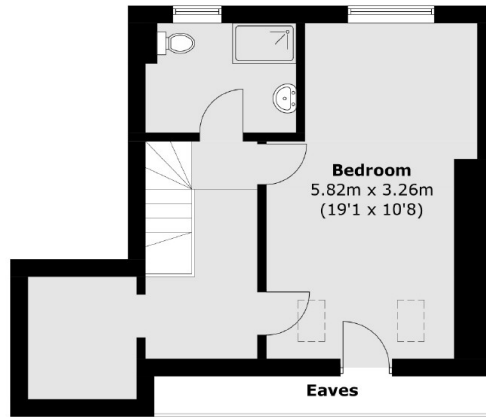
- Extended Family Home
- Four Double Bedrooms
- Three Bathrooms
- Open Plan Kitchen/Diner
- Off Road Parking
- Landscaped Rear Garden



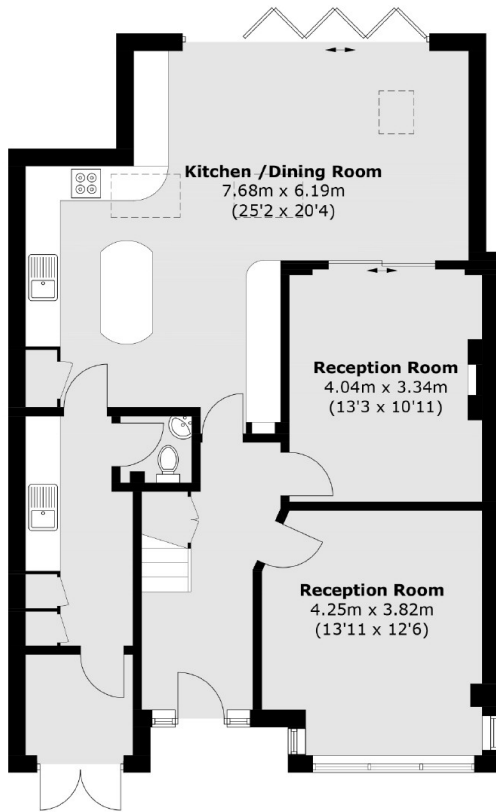
Horncastle Road, London, SE12



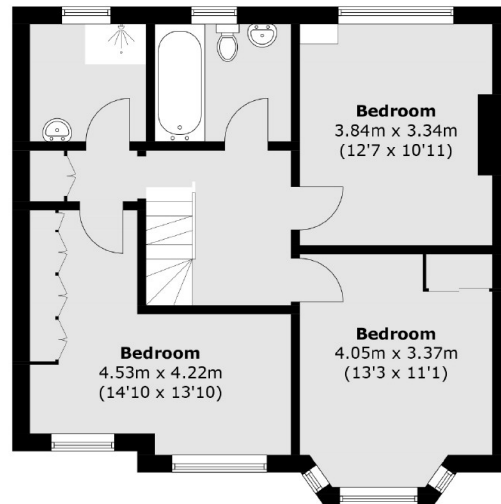
(Not Shown In Actual Location / Orientation)



Second Floor



Ground Floor



First Floor

Total area (approx.): 188.9 sq. m (2033.2 sq. ft) (Excluding Eaves)
Outbuilding: 32.8 sq. m (353.0 sq. ft)