



## Leahurst Road, SE13

£475,000

A Beautifully presented ground floor victoria flat on Leahurst Road. Internally benefitting from a communal entrance hallway, internal hallway, lounge with large windows to the front and multi fuel burner, main bedroom, second bedroom, well equipped kitchen and spacious bathroom with freestanding bath and wetroom style shower, also featuring under floor heating.

Located in an extremely popular road within a few minutes of Hither Green train station (10 minutes to London Bridge), several Ofsted rated outstanding' schools, local shops and the family friendly Manor House Gardens. Blackheath Village is within a mile distance and offers a variety of restaurants, bars, cafes

### Features

- Ground Floor Flat
- Two Bedrooms
- Private Garden
- Beautifully Presented
- Spacious Bathroom
- Modern Kitchen





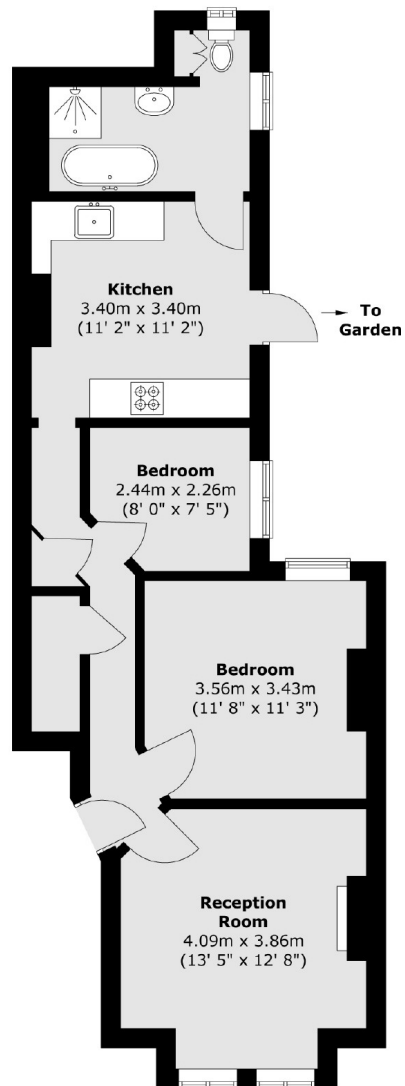
## Leahurst Road, SE13

Externally there is a fully enclosed private SOUTH FACING rear garden which features artificial lawn and raised seating area, ideal for entertaining.





Leahurst Road,  
London, SE13



Total area (approx.) : 60.7 sq. m (653 sq. ft)