



## Le May Avenue, SE12

£900,000

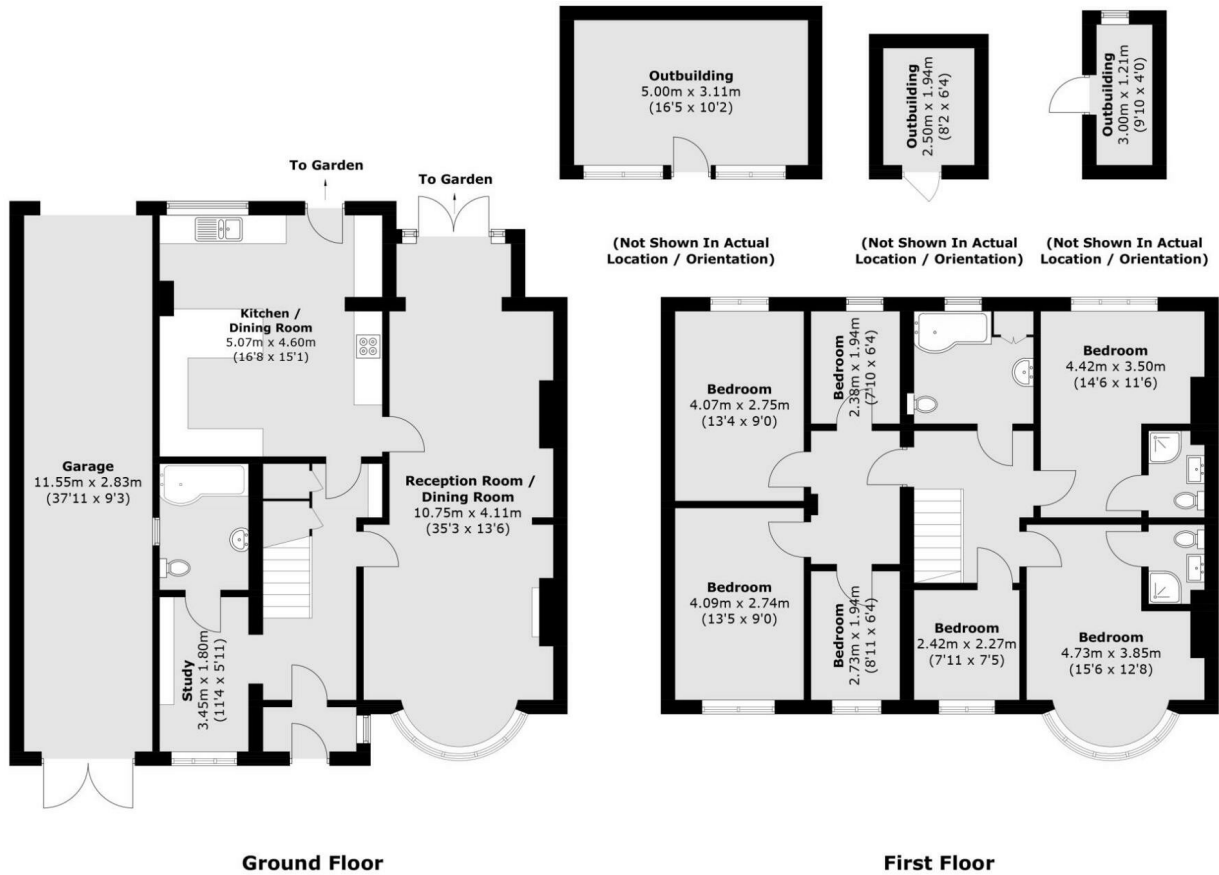
\*\*\* £900,000 - £950,000 Guide Price \*\*\*Exciting opportunity to purchase this huge seven bedroom detached family home on Le May Avenue. The current accommodation comprises of an entrance porch, hallway, study, through reception/dining room, kitchen/breakfast room and bathroom on the ground floor. Upstairs features seven well proportioned bedrooms, two with ensuite shower rooms, family bathroom and access to the fully boarded loft space. Externally there is secure off road parking via the driveway and a huge rear garden giving you the opportunity to extend (STPP) or add further outbuildings such as an annexe.

Le May Avenue is a popular road being so close to Grove Park station in a sought after location, with frequent trains into the city. Grove Park Station has direct links into London Bridge, Charing Cross, Blackfriars, Waterloo East & Cannon Street. Close by are several popular open spaces including Northbrook and Hornfair Parks. The popular Eltham College and Colfe's schools are both within easy reach, as are the conveniences of Grove Park high street.

### Features

Detached Family Home  
Seven Bedrooms  
Huge Potential to Improve  
Massive Rear Garden  
Secure Off Road Parking  
Viewing Highly Encouraged

# Le May Avenue, London, SE12



Total area (approx.): 186.0 sq. m (2,002.0 sq. ft)  
 Garage (approx.): 31.8 sq. m (342.3 sq. ft)  
 Outbuildings (approx.): 24.3 sq. m (261.5 sq. ft)