



Springbank Road, SE13  
£1,000,000

**Dexters**



## Springbank Road, SE13

\*\*\* Guide Price £1,000,000 - £1,100,000\*\*\* This stunning three bedroom double-fronted extended family home on Springbank Road is located in the ever-popular leafy Hither Green area famous for its outstanding primary schools and excellent transport links. Served by three main train lines, the area is popular with commuters as journeys to Central London take as little as 10 minutes. Access to Canary Wharf/Bank (via the DLR) is available via Lewisham Station, which can be reached by train in 4 minutes. The property is a stone's throw away from two superb green areas - Manor House Gardens and Mountsfield Park.

Inside this beautiful home you will find a grand feeling entrance hallway, spacious reception room, lounge, dining room, modern kitchen/breakfast room with utility space, guest WC and access to the cellar on the ground floor. The first floor features three spacious double bedrooms, family bathroom and modern shower room. There is also access to the large loft space giving you plenty of potential to convert (subject to planning permission). Extremely well presented throughout with a mix of modern and period elements creating a superb living environment. Externally there is off road parking to the front for multiple vehicles and to the rear you will find a fully enclosed south-west facing garden boasting both patio and lawned areas with various plant borders giving the perfect entertaining space.

### Features

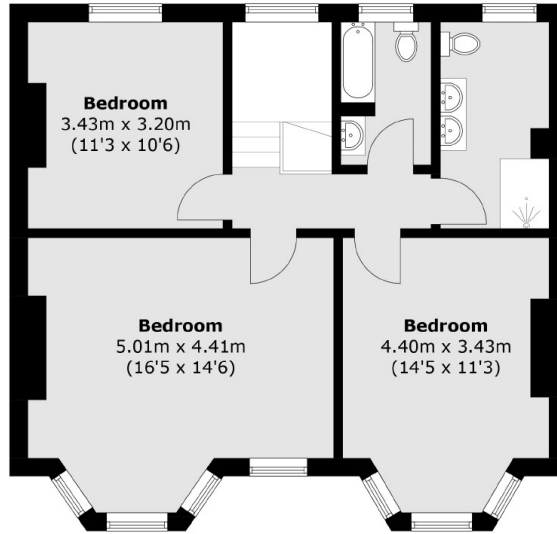
- Double Fronted Family Home
- Three Double Bedrooms
- Two Reception Rooms
- Two Bathrooms
- Modern Kitchen/breakfast room
- Off Road Parking for multiple



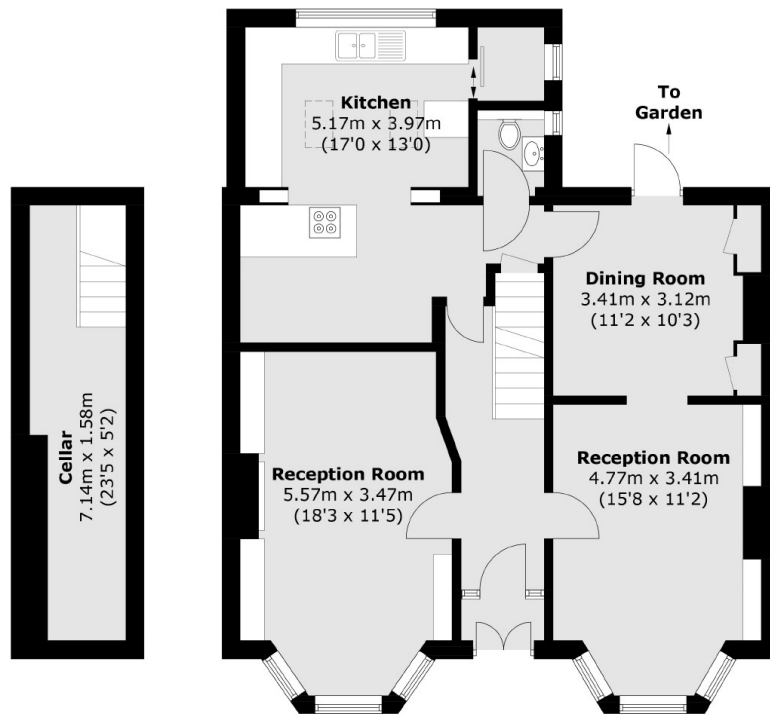




# Springbank Road, London, SE13



**First Floor**



**Basement**

**Ground Floor**

Total area (approx.): 153.6 sq. m (1,653.4 sq. ft)