



Leyland Road, SE12

£600,000

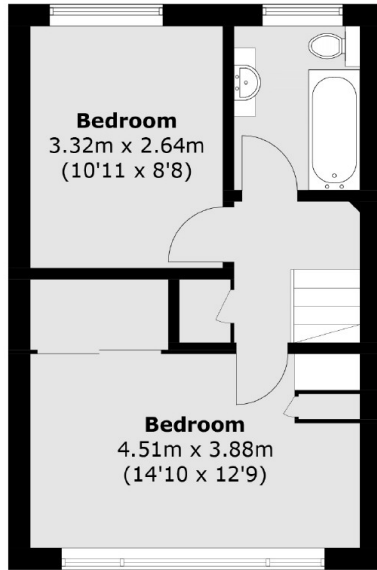
Well presented three/four bedroom, two bath town house which is situated along a sought after road in an ideal location for Lee Station. On the ground floor there is an entrance hall with built in clever closet storage, double bedroom, an additional room that can be used as a fourth bedroom, study or reception room and a shower room. On the first floor there is a large open plan living area and kitchen/diner and on the top floor there is a large master bedroom, further double bedroom and family bathroom with bath and overhead shower. This property further benefits from driveway parking and a well kept private garden.

Situated in a much sought after no through road, in an excellent location for shops, cafés and restaurants. Minutes from Lee station, Colfes independent school and close to Blackheath Village.

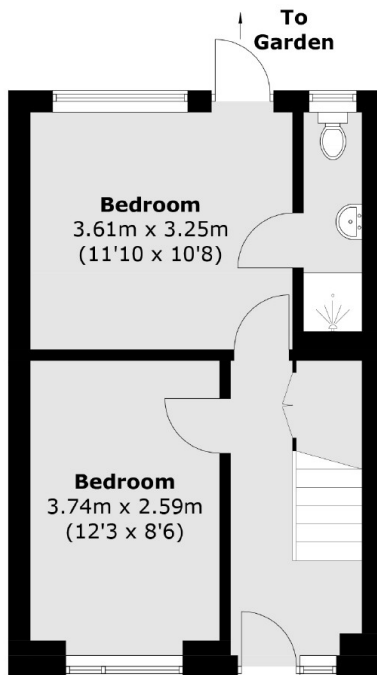
Features

- Three Storey Town House
- Three Double Bedrooms
- Off Road Parking
- Private Rear Garden
- No Upward Chain
- Popular Location

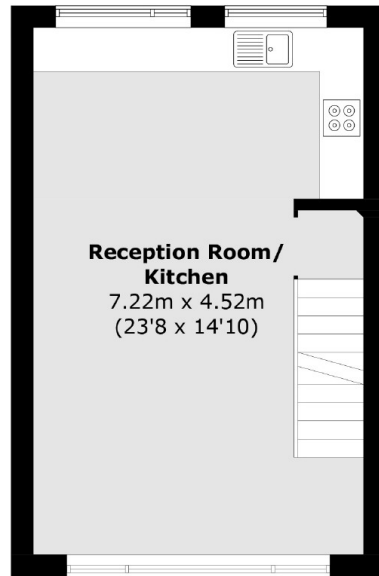
Leyland Road,
London, SE12



Second Floor



Ground Floor



First Floor

Total area (approx.): 98.8 sq. m (1,063.5 sq. ft)