

Pegler Square, SE3

£575,000

*** Offers in Excess of *** An opportunity to acquire this fantastic two bedroom apartment situated in a sought after location which has been finished to a high standard, Further benefiting from a private balcony with wonderful views over the city.

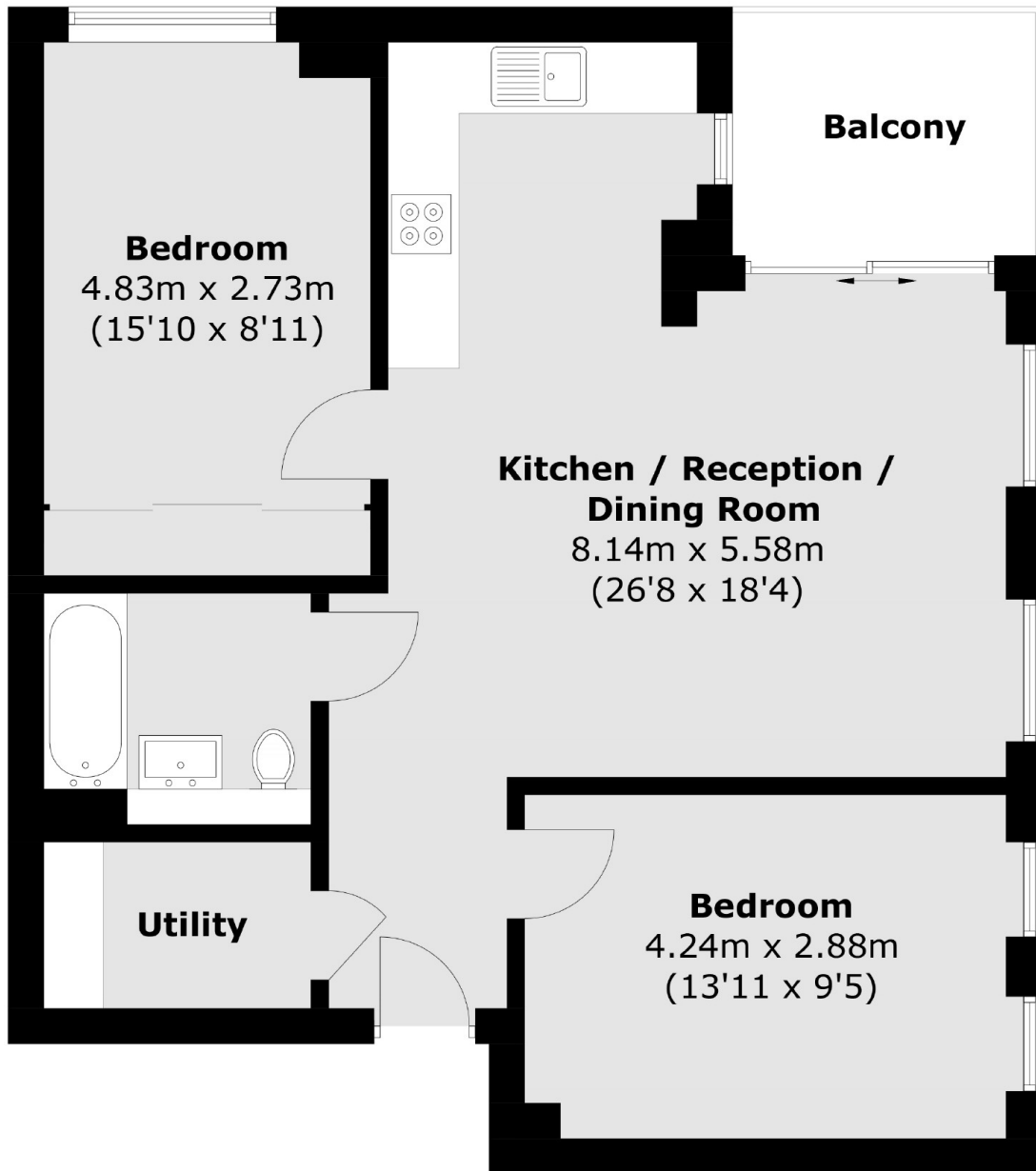
This property is within immediate access of Kidbrooke train station which runs to London Bridge station in 15 minutes, Waterloo East in 20 minutes, Charing Cross in 25 minutes and 28 minutes to London Victoria.

The development benefits from a vast amount of parkland and it is situated in the immediate vicinity of some of the most vibrant areas of London, Blackheath Village and Greenwich, both featuring an array of great boutiques, restaurants and bars.

Features

- Modern
- Private Balcony
- Sought After Location
- Long Lease
- 24hr Concierge
- Residence Gym

Pegler Square,
London, SE3



Total area (approx.): 66.1 sq. m (711.5 sq. ft)
Balcony : 5.2 sq. m (56.0 sq. ft)