



Ennersdale Road, SE13

£700,000

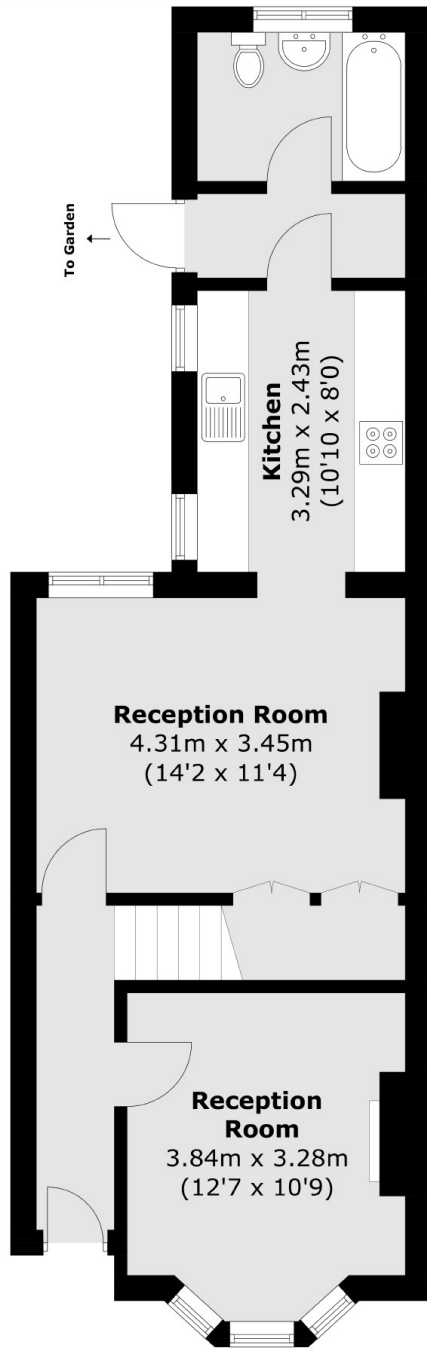
A beautifully presented three bedroom Victorian terrace home on Ennersdale Road, a popular location within Hither Green. In brief this stunning property boasts an entrance hallway, spacious lounge, dining room, modern well equipped kitchen and well presented family bathroom on the ground floor. Upstairs features a sizeable main bedroom and two further well proportioned bedrooms. Externally there is a lovely fully enclosed south facing rear garden, a perfect place to entertain.

The property is located very close to both Manor House Gardens and Manor Park. Just 300 yards away are delightful local shops, a recently opened Sainsbury's local and Hither Green Station with London Bridge only 11 minutes away. The house is very close to three Ofsted Outstanding rated primary schools.

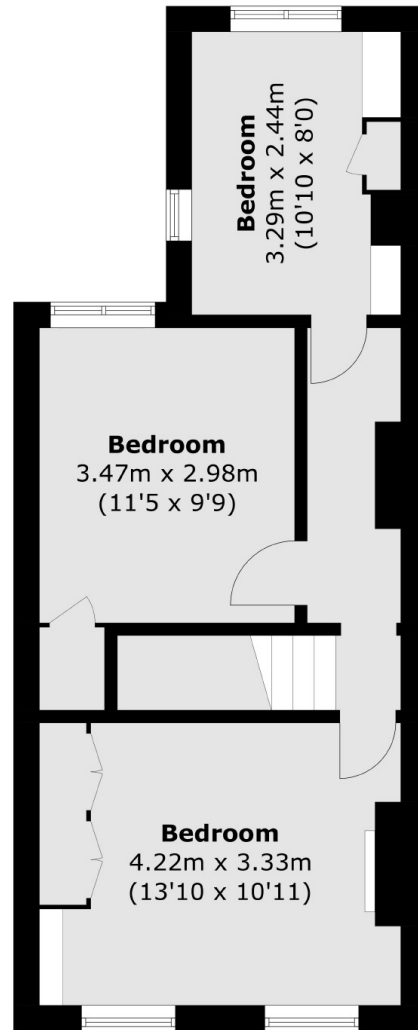
Features

- Stunning Victorian Terrace
- Three Bedrooms
- Two Reception Rooms
- Short Walk from Hither Green
- South Facing Garden
- Extremely High Standard

Ennersdale Road,
London, SE13



Ground Floor



First Floor

Total area (approx.): 92.1 sq. m (991.3 sq. ft)