



Kingshurst Road, SE12

£799,950

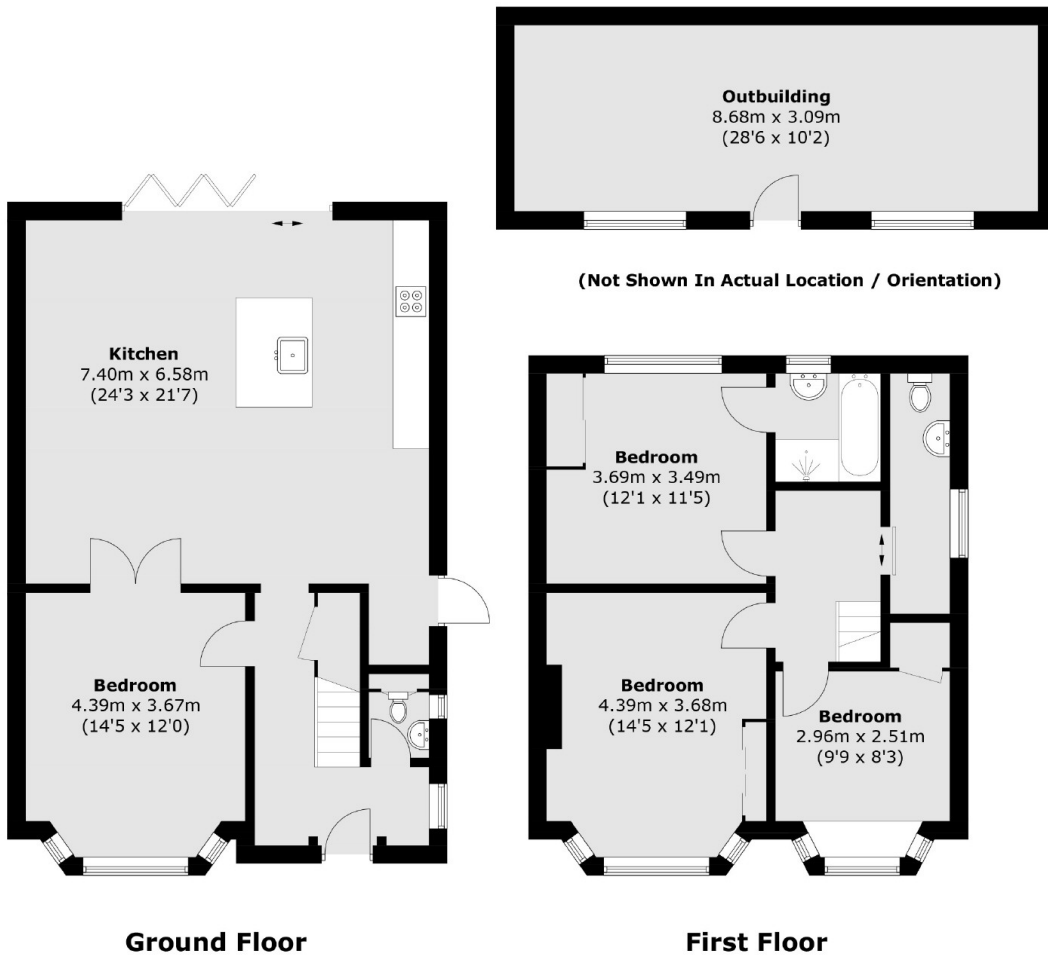
A well presented three bedroom 1930's semi detached family home on Kingshurst Road with plenty of potential to extend (STPP). In brief this lovely property comprises of an entrance hallway, front reception room, huge open plan kitchen/living area with bi-folding doors to the garden and a separate toilet on the ground floor. Upstairs you will find three well proportioned bedrooms and bathroom. Externally there is off road parking and sizeable rear garden.

Lee train station, Colfes school and a variety of local shops, restaurants and bars are all within a short walk. The recently refurbished Lord Northbrook pub on Burnt Ash Road offers a varied selection of Ales and seasonal hot and cold food. Blackheath Village, Lewisham Town centre and DLR are also easily accessible. Chain free.

Features

Semi Detached
Three Bedrooms
Extended to Rear
Open Plan Kitchen/Diner
Off Road Parking
Sizeable Garden

Kingshurst Road,
London, SE12



Total area (approx.): 121.8 sq. m (1,311.1 sq. ft)
Outbuilding: 27.1 sq. m (291.7 sq. ft)