



Lee Road, SE3

£350,000

Situated close to Blackheath Village and adjacent to a picturesque stream is this lovely top floor one bedroom apartment in a boutique development. Briefly comprising of an entrance hallway, open plan kitchen/living area, double bedroom and modern shower room. This property is being sold with NO UPWARD CHAIN.

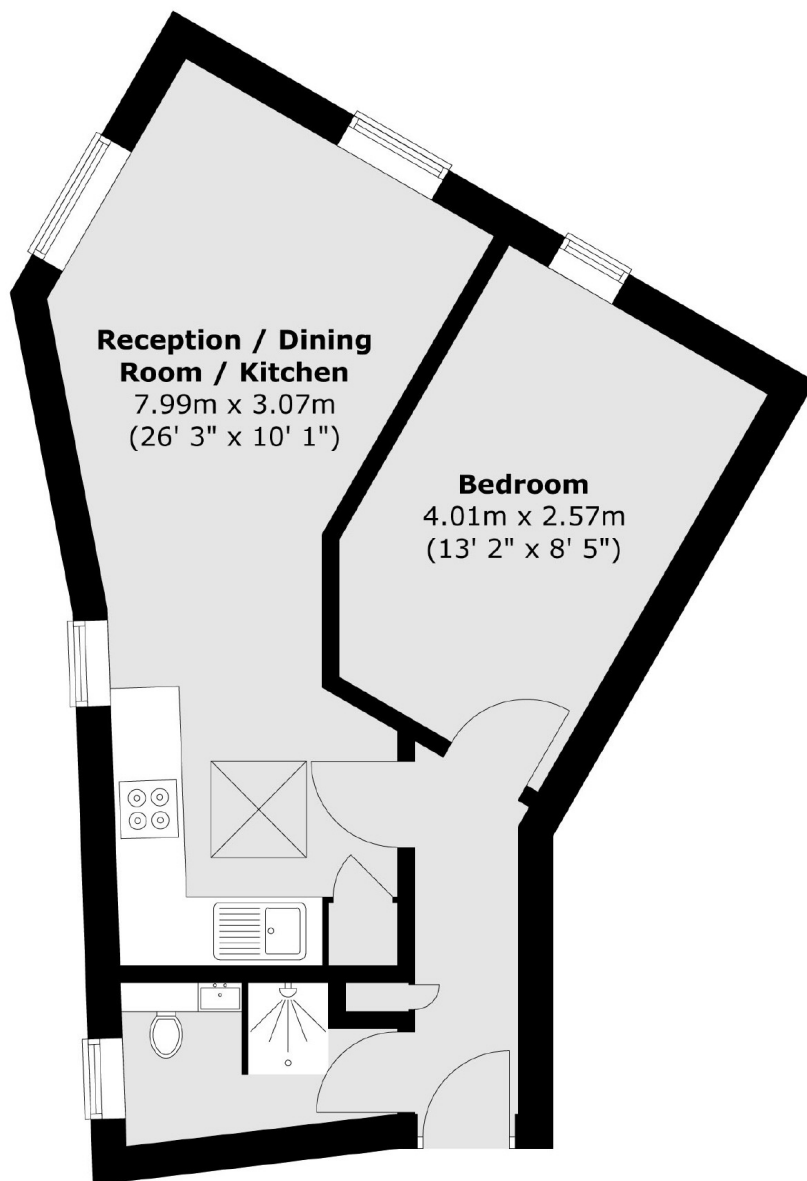
Location is key with Blackheath Village being a short walk from the flat, as well as Lewisham town centre only a short bus journey away.

Features

- 0.6 miles from Blackheath Village
- Chain Free
- Modern kitchen & Shower room
- 0.6 miles from Lee Station
- Long lease
- Top floor
- Stunning throughout

Lee Road,
London, SE3

Third Floor



Total area (approx.) : 36.6 sq. m (394 sq. ft)

Dexters

Lee
430-432 Lee High Road
Lee
London
Sales
020 8815 2210

Energy Rating: C. We aim to make our particulars both accurate and reliable. However they are not guaranteed; nor do they form part of an offer or contract. If you require clarification on any points then please contact us, especially if you're traveling some distance to view. Please note that appliances and heating systems have not been tested and therefore no warranties can be given as to their good working order.

 **RICS** | Regulated
Estate Agent
and Letting Agent

dexters.co.uk