



Manor Park, SE13

£450,000

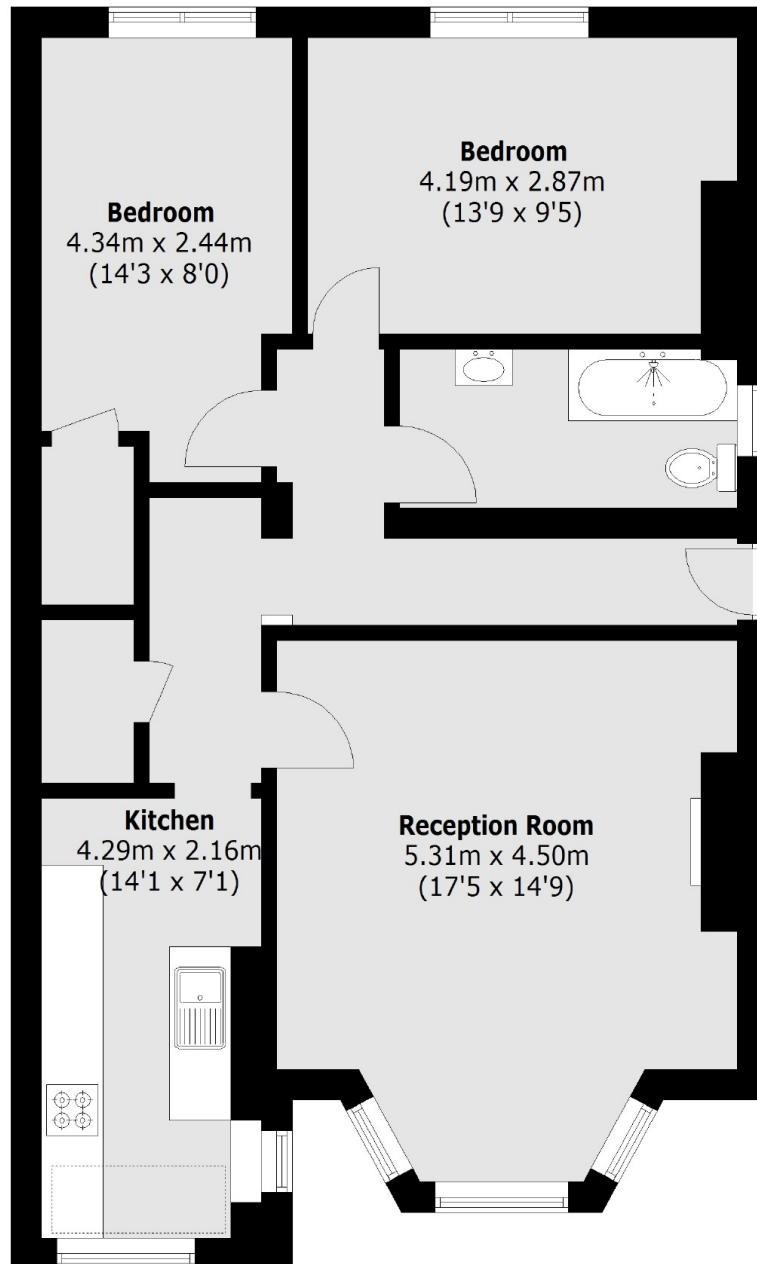
Situated amongst a tree-lined road within a desirable residential part of Lewisham, is this bright and spacious period conversion. This lower ground floor flat comprises of two double bedrooms, a spacious reception with high ceilings a separate kitchen and a bright and modern three piece bathroom. This period conversion benefits from high ceilings, wooden floors, off street parking and large sash windows throughout.

Super convenient with Hither Green station about 0.4 miles distant for London Bridge from 10 mins, Charing Cross, Cannon Street via Lewisham where you can also get the DLR.

Features

- Lower Ground Floor Flat
- Two Double Bedrooms
- Spacious Living Area
- Well Presented Throughout
- Shared Garden Access
- Off Street Parking

Manor Park,
London, SE13



Lower Ground Floor

Total area (approx.): 74.76 sq. m (804.7 sq. ft)