



Wellmeadow Road, SE13 £360,000

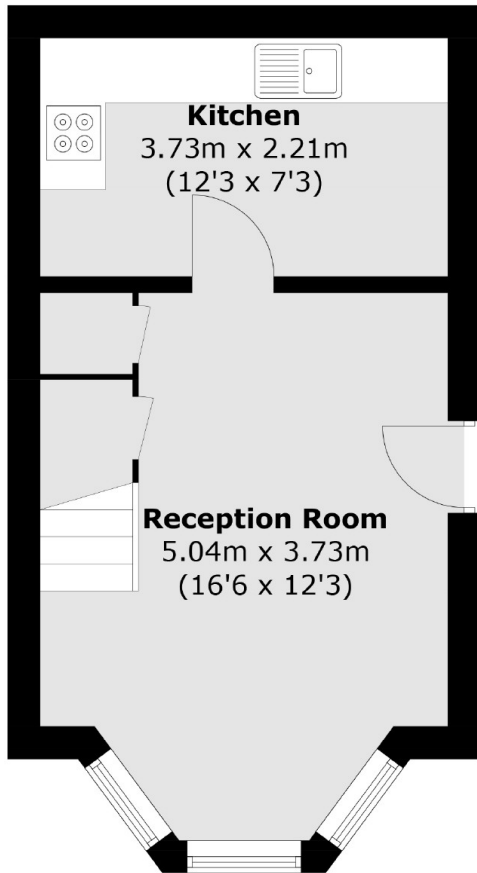
Well presented two bedroom split level Victorian conversion flat situated on Wellmeadow Road, a quiet residential street close to Hither Green. This lovely home briefly comprises of a spacious reception room with large bay window, separate kitchen, stairs to the first floor with two bedrooms and a family bathroom. Externally there is off road parking for one vehicle.

Wellmeadow Road is a peaceful residential road that benefits from a close proximity to the wealth of amenities found in Hither Green as well as excellent transport links from the station.

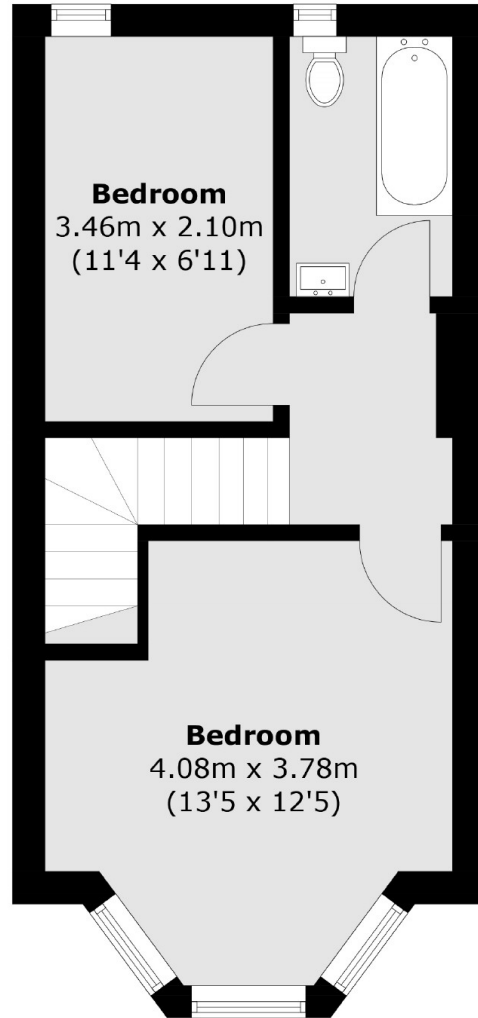
Features

- Two Bedrooms
- Split Level Flat
- Spacious Living Area
- Off Road Parking
- Well Presented
- Popular Location

Wellmeadow Road,
London, SE13



Ground Floor



First Floor

Total area (approx.): 56.9 sq. m (612.5 sq. ft)