



Lee High Road, SE13

£360,000

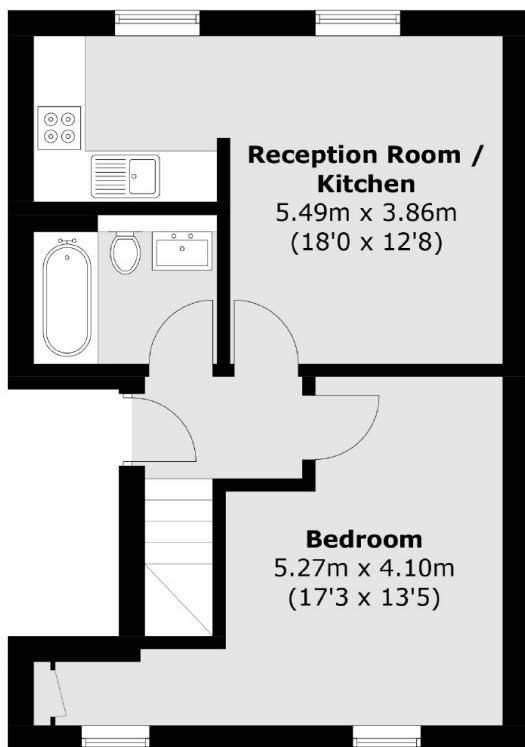
Presented in excellent condition, this two double bedroom split level, top floor flat is marketed chain free. This home is light, airy, bright neutrally decorated throughout. As you walk into this home there is a large living room leading to the newly fitted kitchen, a spacious bedroom and fully tiled bathroom. Upstairs there is another large bedroom with a en-suite bathroom. Additional benefits include a share of the freehold, beautiful sash windows and plenty of storage cupboards.

Set on Lee High Road and benefits from a close proximity to the wealth of amenities found in Lee and nearby Blackheath. For excellent transport links, Lee Station is also easily accessible.

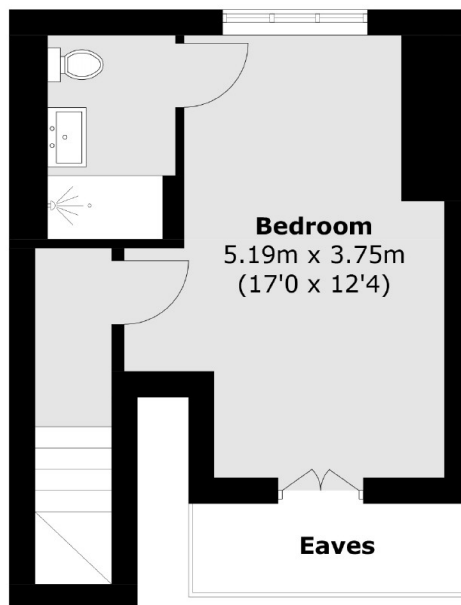
Features

Two Double Bedrooms
Open Plan Living Area
Well Presented Throughout
Ensuite Bathroom

Lee High Road,
London, SE13



Second Floor



Third Floor

Total area (approx.): 64.5 sq. m (694.2 sq. ft)
(Excluding Eaves)