



Manor Park, SE13

£1,900,000

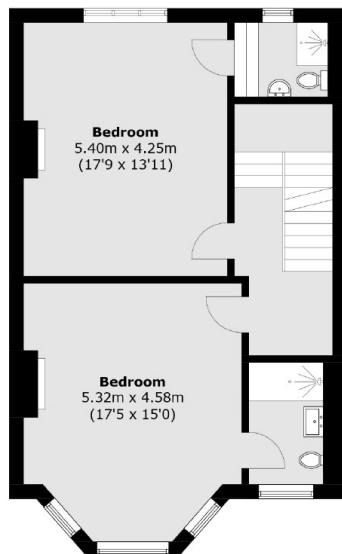
Enviably located on a prestigious road in South East London is this imposing semi detached family home offering over 3000sq ft of accommodation. The property has been recently renovated to a high standard, creating a beautiful five bedroom, four bathroom, family home which is situated moments away from Hither Green Station.

Manor Park is located close to the hugely popular Manor House Gardens with children's play park, a pond and a farmers market every Saturday. Just moments away is the vibrant centre of Hither Green which includes a French Patisserie Cafe (La Delice), an incredible Deli, cocktail bar (Drink@Bob's) a florist (Otto's Greenhouse) and Italian restaurant and pizzeria (Sapore Vero), craft beer and chocolate shop (Park Fever), Hither Green Station giving access into Central London and London Bridge. There are several popular primary schools close by including the Ofsted "Outstanding" Brindishe Green Primary School.

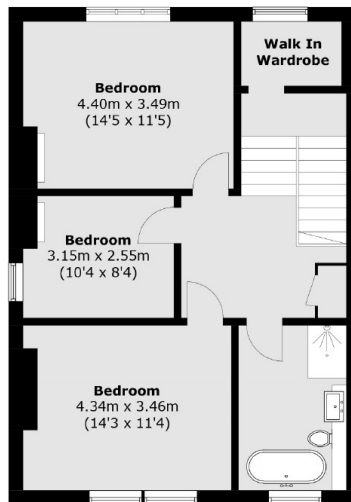
Features

- Semi-Detached
- Five Bedrooms
- Four Bathrooms
- Split Across Four floors
- Off Street Parking
- Garage
- O.I.E.O
- Chain Free

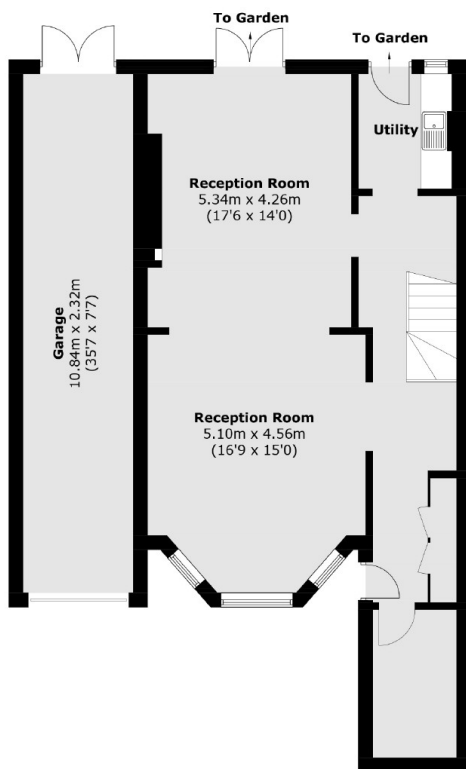
Manor Park, London, SE13



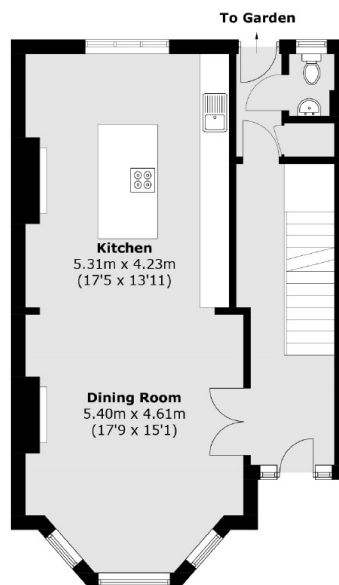
First Floor



Second Floor



Lower Ground Floor



Raised Ground Floor

Total area (approx.): 269.4 sq. m (2,899.8 sq. ft)
Garage (approx.): 24.9 sq. m (268.0 sq. ft)