



Ronver Road, SE12

£550,000

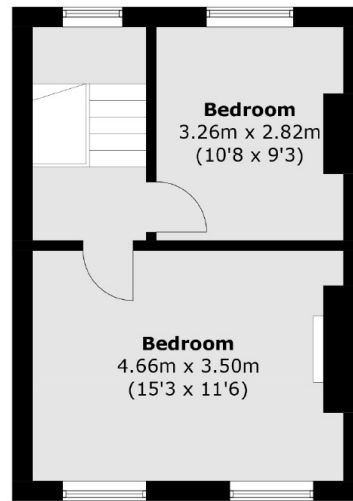
A beautiful three storey two/three bedroom family home on Ronver Road, a popular location. This property briefly comprises of an entrance hallway on the upper ground floor with access to the spacious lounge/potential third bedroom and family bathroom. The lower ground floor consists of a well equipped kitchen with access to the private rear garden and front reception room with its own entrance. Upstairs on the first floor you will find two double bedrooms. An ideal family home with potential to extend (STPP).

Ronver road is 0.6 miles away from Lee station, Offering direct links into London Bridge, Waterloo East, Cannon Street & Charing Cross. Changes are possible at Lewisham for the DLR and New Cross for the East London line. Within the immediate area there is a variety of local shops. You are also within walking distance to Northbrook Park. Further into Lee there are some locally renowned restaurants and pubs, as well as the wonderful Manor House Gardens.

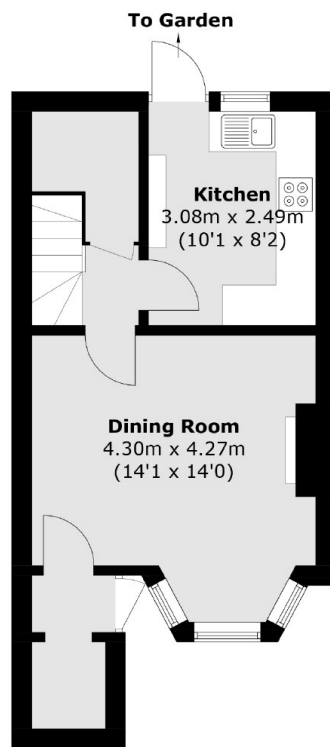
Features

Victorian Town House
Two/Three Bedrooms
Extension Potential STPP
Private Rear Garden
Well Presented Throughout
Split Across Three Levels

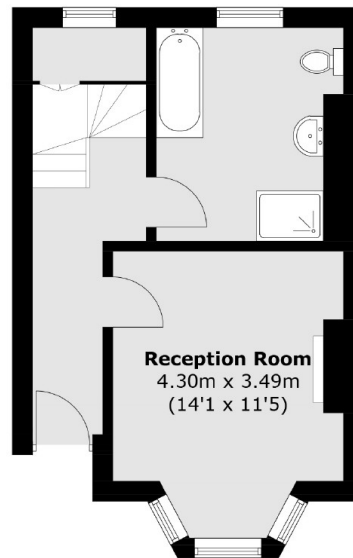
Ronver Road,
London, SE12



First Floor



Lower Ground Floor



Ground Floor

Total area (approx.): 97.1 sq. m (1,045.2 sq. ft)