



Heather Road, SE12

£395,000

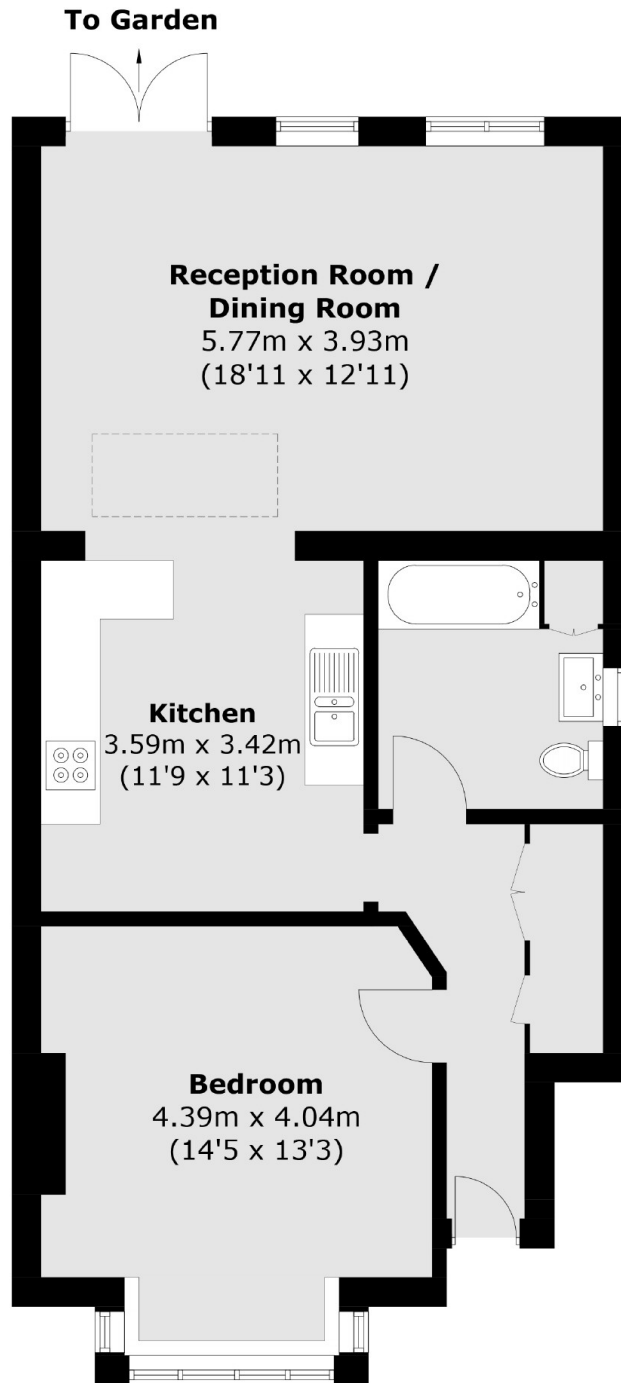
A superb opportunity to acquire this stunning extended ground floor one bedroom period conversion flat on Heather Road. Internally this beautiful home comprised of an entrance hallway leading to the large double bedroom, spacious modern bathroom and finally to the huge open plan L shaped kitchen/living area which has been extended out, reconfigured and decorated to a high standard by its current owners. Externally this fantastic property has a well proportioned enclosed rear garden with both patio and lawned areas.

Quietly situated on a sought after, tree lined street, the property is ideally situated for local amenities and has excellent transport links to the City, being within walking distance of both Grove Park (0.5miles) and Lee (0.8miles) stations for trains to London Bridge, Cannon Street and Charing Cross.

Features

- Ground Floor Flat
- Extended to Rear
- Beautifully Presented
- Private Rear Garden
- Modern Kitchen & Bathroom
- Large Double Bedroom

Heather Road,
London, SE12



Total area (approx.): 66.4 sq. m (714.7 sq. ft)

Dexters

Lee
430-432 Lee High Road
Lee
London
Sales
020 8815 2210

Energy Rating: D. We aim to make our particulars both accurate and reliable. However they are not guaranteed; nor do they form part of an offer or contract. If you require clarification on any points then please contact us, especially if you're traveling some distance to view. Please note that appliances and heating systems have not been tested and therefore no warranties can be given as to their good working order.

 **RICS** | Regulated
Estate Agent
and Letting Agent

dexters.co.uk