



## St. Mildreds Road, SE12

£535,000

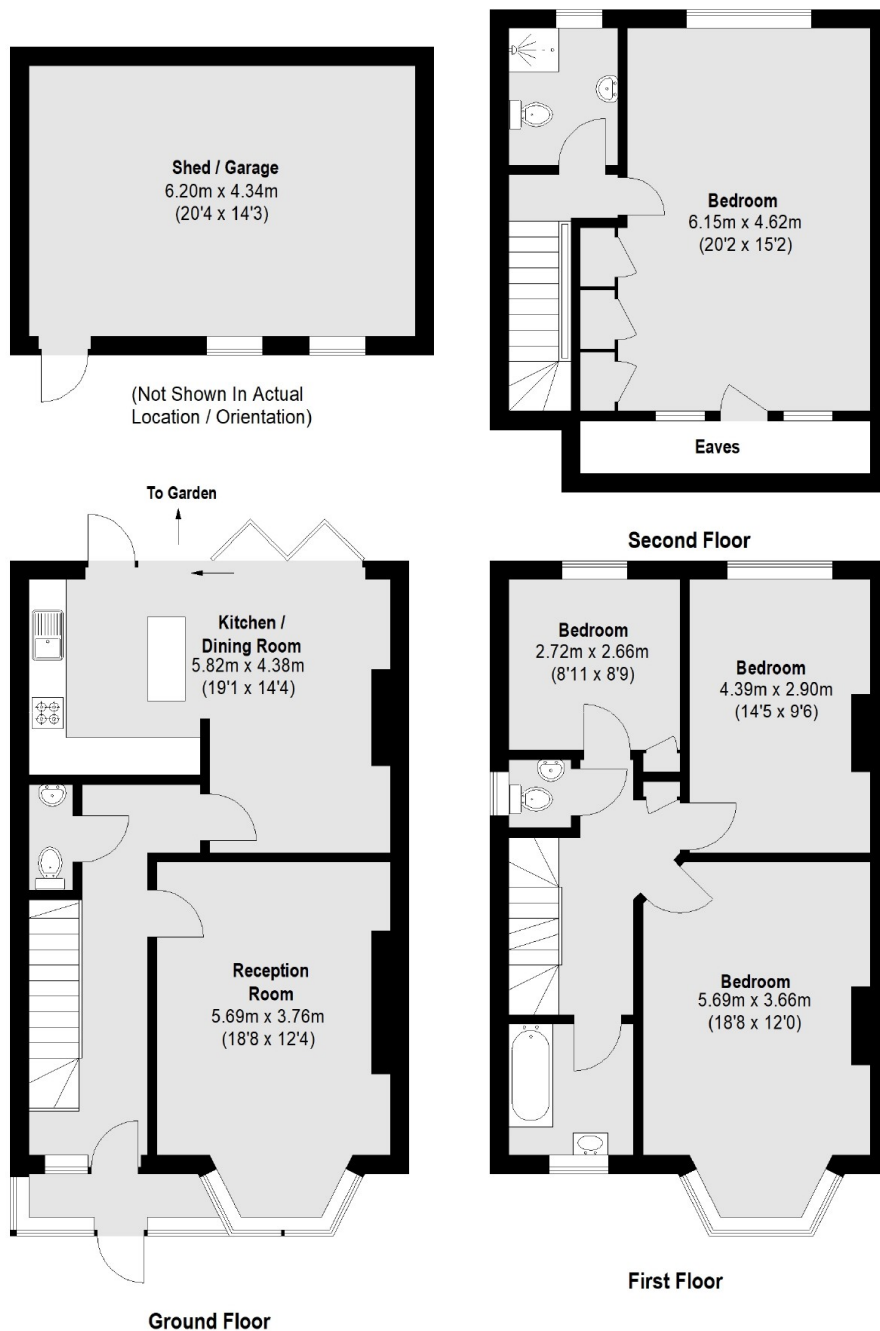
An opportunity to acquire this four bedroom 1930's semi-detached family home in sought after location further benefitting from a south facing garden which backs onto the wonderful allotments.

Allying within the catchment of sought-after primary schools. Commuter links are also available to a choice of London Stations, whether you need access to the City with trains to London Bridge, Blackfriars, and Cannon Street from Hither Green, Bellingham or the twin Catford Stations.

### Features

- OIEO
- South Facing Garden
- No Work Required
- Freehold
- Semi Detached
- Family Home

# St. Mildreds Road, London, SE12



Total area (approx.): 150.79 sq. m (1623 Sq. ft)  
(Excluding Eaves)  
Shed / Garage : 27.14 sq. m (292 Sq. ft)