



Lampmead Road, SE12

£350,000

*** Offers in Excess of *** This wonderful two bedroom first floor flat boasts bright and spacious interiors and a fantastic location in Lee. The property comprises reception room with space to dine and open-plan kitchen, two well proportioned bedrooms and a stylish bathroom with both separate bath & shower.

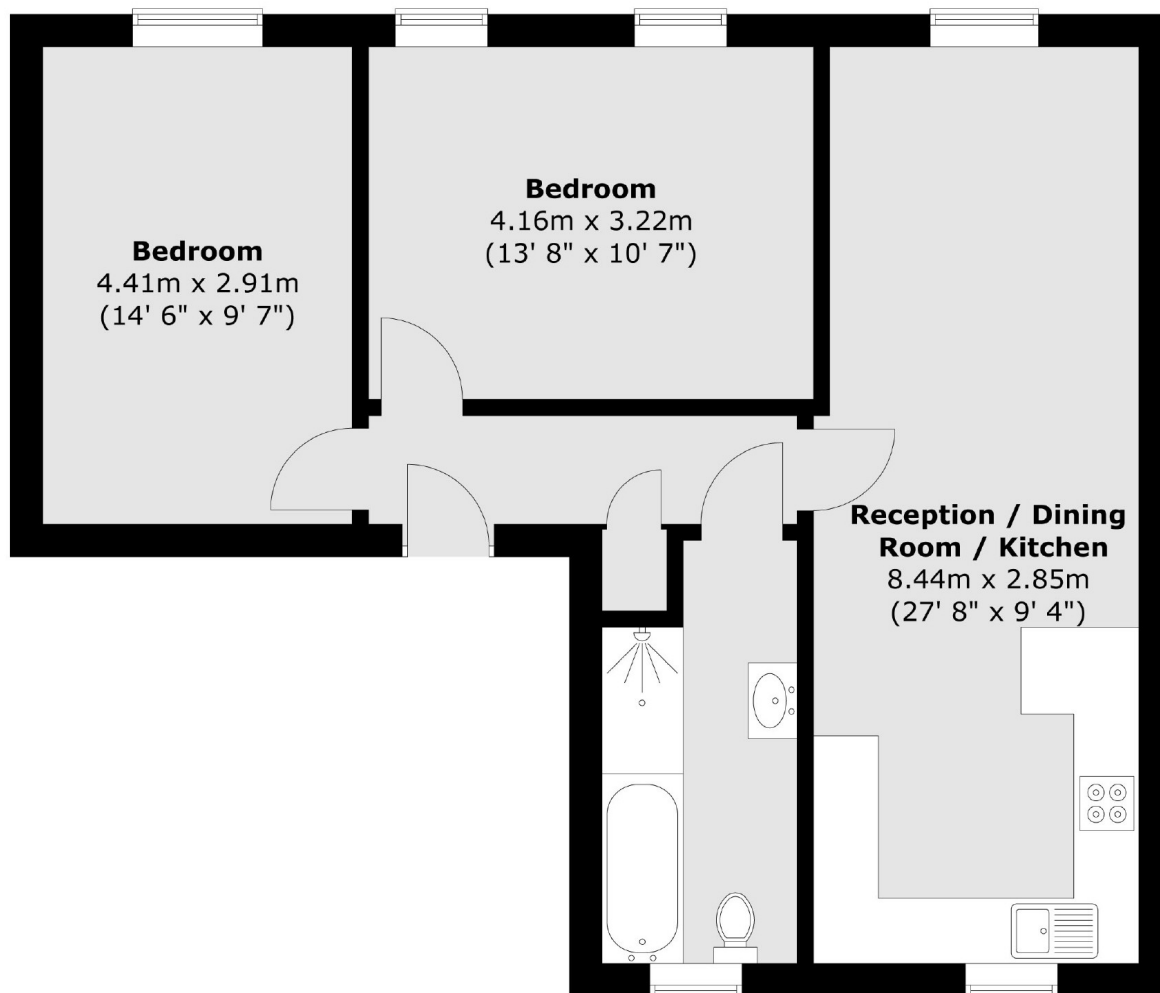
Lampmead Road is ideally situated for access to the many amenities of Lee High Road with Lewisham and Blackheath only slightly further afield. Nearby public transport links include Hither Green (National Rail), Blackheath Station (National Rail) and Lee Station (National Rail) for easy journeys in and out of central London.

Features

- First Floor Flat
- Two DOUBLE Bedrooms
- Open Plan Kitchen/Living Area
- Spacious Bathroom
- Well Presented Throughout
- Ideal First Home

Lampmead Road,
London, SE12

First Floor



Total area (approx.) : 64.6 sq. m (695 sq. ft)