



## Pragnell Road, SE12

£625,000

An opportunity to acquire this, four bedroom semi detached family home in a sought after location, With potential to extend and further benefits from off street parking and a garage.

Conveniently located for Grove Park (0.53 miles) with frequent trains into the city. Grove Park Station has direct links into London Bridge, Charing Cross, Blackfriars, Waterloo East & Cannon. Close by are several popular open spaces including Northbrook and Hornfair Parks. The popular Eltham College and Colfes schools are both within easy reach as are the conveniences of Grove Park high street.

### Features

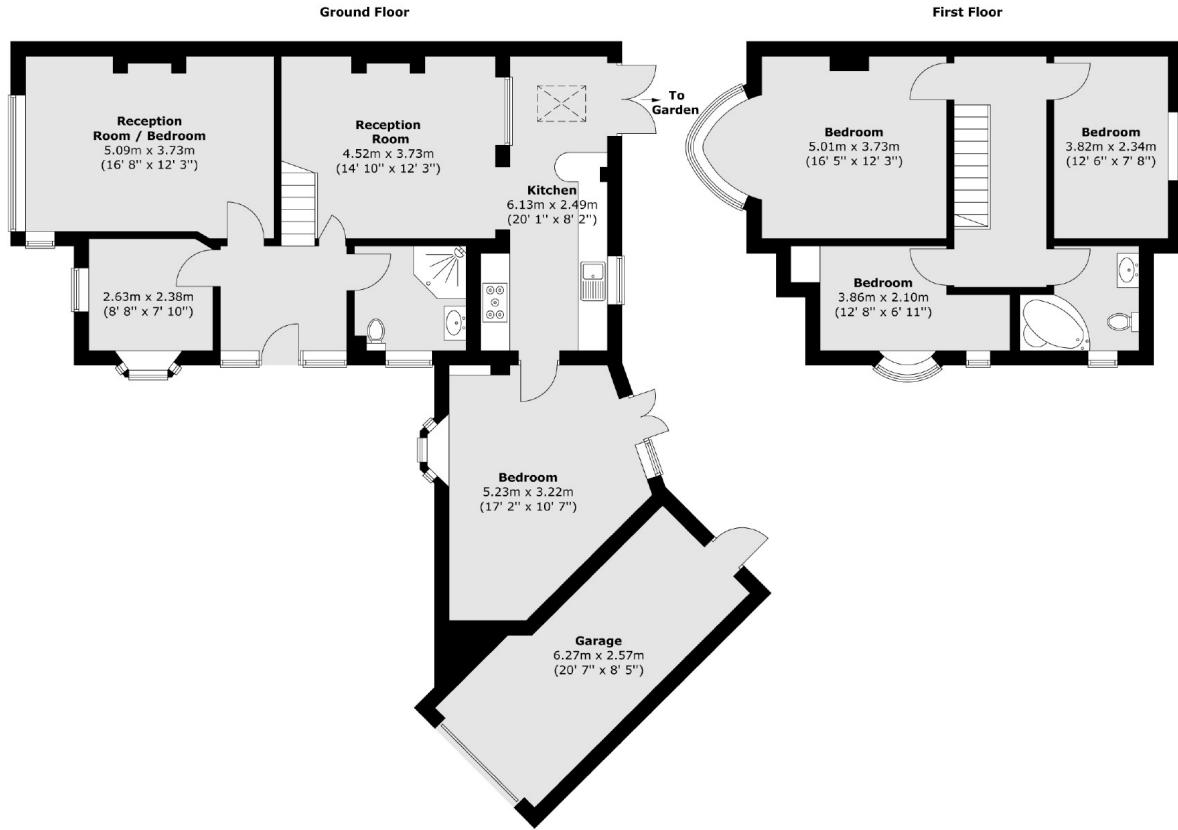
- 1930's
- Off Street Parking
- Garage
- Four Bedrooms
- Good Condition
- Sought After Location



Pragnell Road, SE12



# Pragnell Road, London, SE12



Total area (approx.) : 136.8 sq. m (1472 sq. ft)  
Total garage area (approx.) : 16.9 sq. m (182 sq. ft)