



## Manor Lane Terrace, SE13

£1,250,000

An opportunity to acquire this charming five bedroom end of terrace Victorian family home in a sought after location. The property further benefits from an open-plan kitchen/entertaining space, Separate lounge, fully fitted period yoga room/home office, garage and off-street parking.

Manor Lane Terrace is a pretty residential street which is ideally located for easy access into a selection of stations, the local amenities nearby and of course Manor House Gardens. There is also a fantastic selection of schools nearby.

### Features

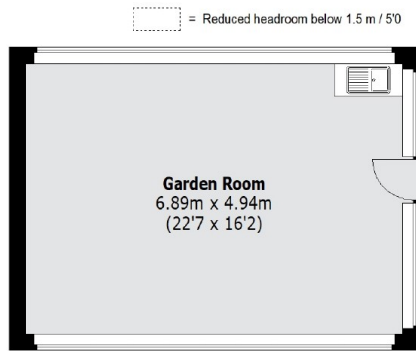
- Five Bedrooms
- End Of Terrace
- Yoga Room/ Home Office
- Double Drive
- Sought After Location
- Family Home



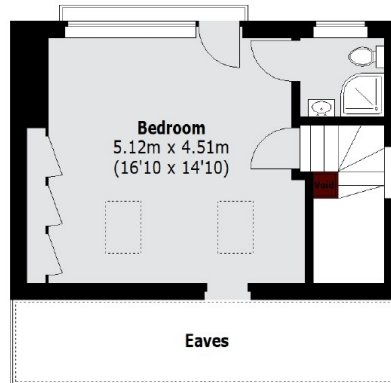
Manor Lane Terrace, SE13



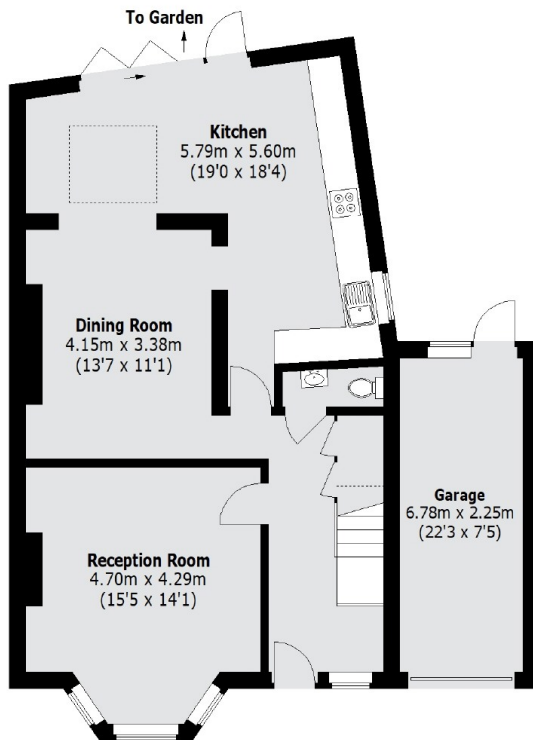
# Manor Lane Terrace, London, SE13



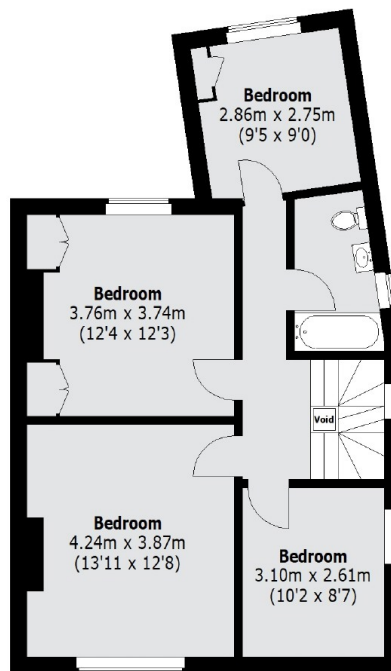
(Not Shown In Actual  
Location / Orientation)



**Second Floor**



**Ground Floor**



**First Floor**

Total area (approx.): 163.05 sq. m (1755 sq. ft)  
(Excluding Void / Eaves)  
Garden Room: 34.32 sq. m (369 sq. ft)  
Garage: 13.3 sq. m (143 sq. ft)