



Luffman Road, SE12

£700,000

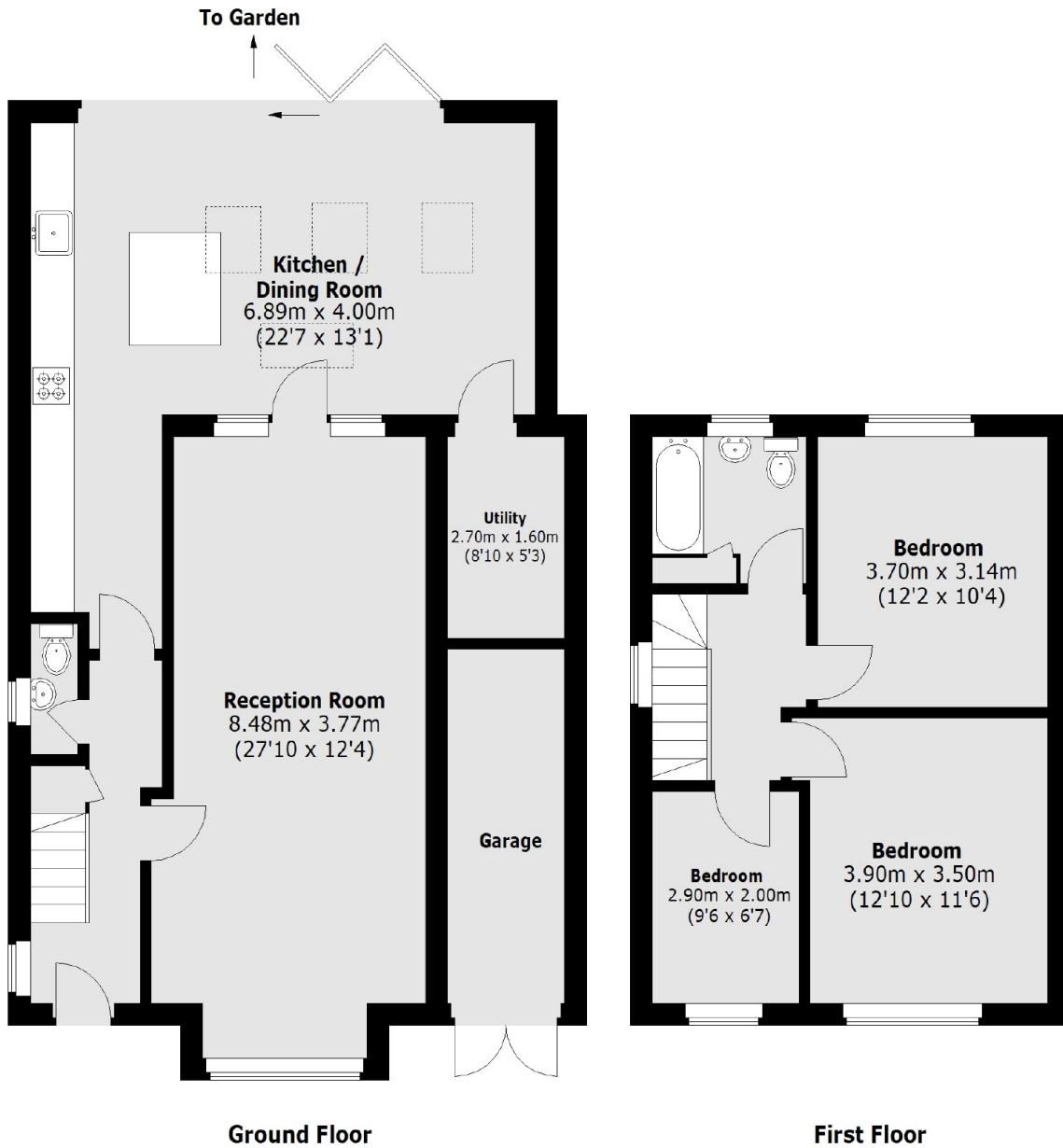
A charming three bedroom detached 1930's family home in a sought after location, with a substantial garden. The property further benefits from off street parking and potential to extended STPP.

Conveniently located for Grove Park station with frequent trains into the city. Grove Park Station has direct links into London Bridge, Charing Cross, Waterloo East & Cannon street. Close by are several popular open spaces including Northbrook and Hornfair Parks. The popular Eltham College and Colfes schools are both within easy reach as are the conveniences of Grove Park high street.

Features

- Detached
- Chain Free
- Potential To Extend STPP
- Good Condition
- Off Street Parking
- Sought After Location

Luffman Road,
London, SE12



Total area (approx.): 121.45 sq. m (1307 sq. ft)
(Excluding Garage)