



## Brookhill Road, SE18

### £260,000

Situated on a sought-after residential street in the heart of Woolwich, this well-presented two bedroom apartment is set within a Victorian conversion, offering a private courtyard garden and excellent transport links.

Perfectly positioned just moments from Woolwich Arsenal DLR and mainline stations, the property offers easy access into the City and Canary Wharf. Local shops, cafés, and the Royal Arsenal Riverside development are also within walking distance.

### Features

- Two Bedrooms
- Victorian Conversion
- Private Courtyard
- Close To Woolwich Arsenal
- Fitted Kitchen
- Ground Floor



## Brookhill Road, SE18

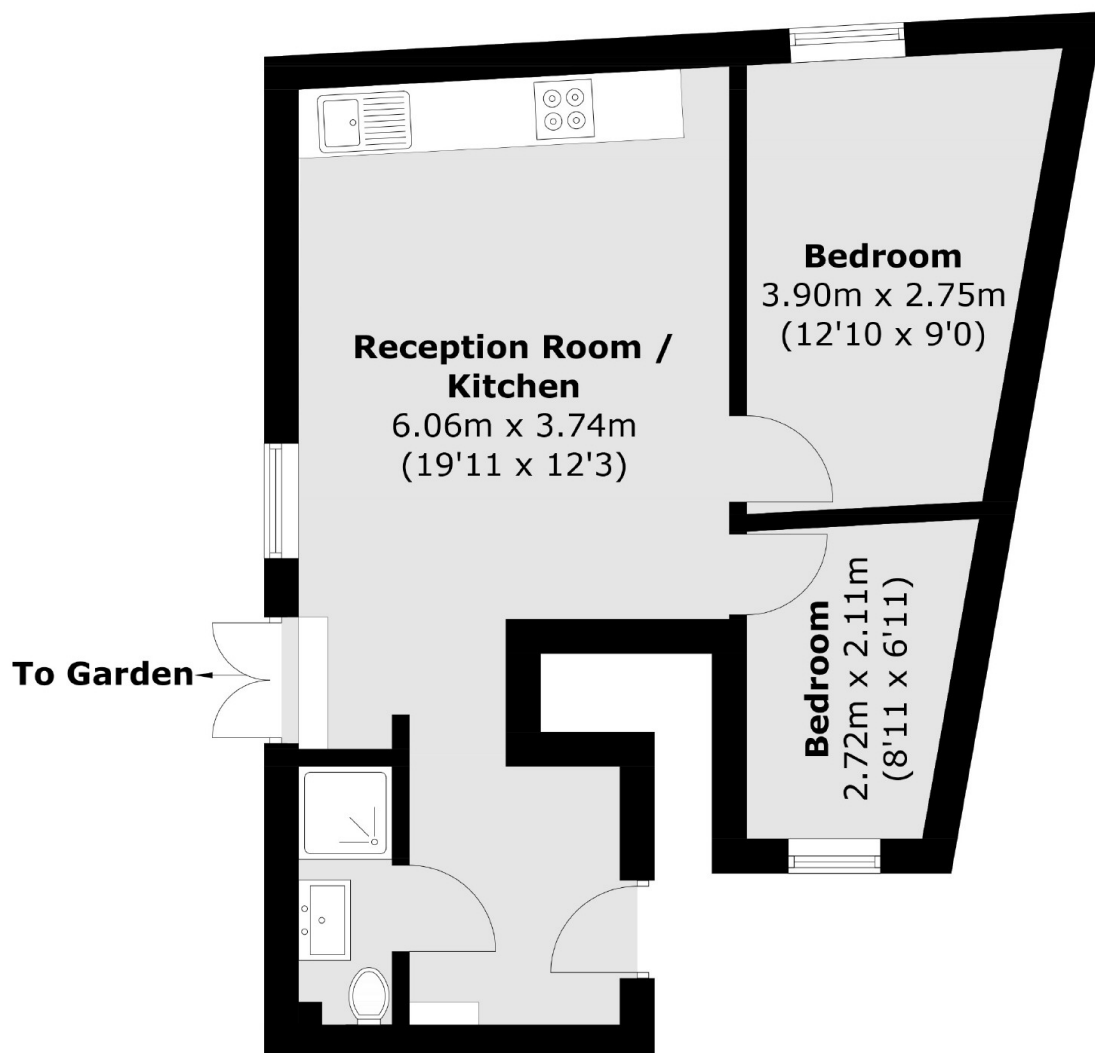
Located on the ground floor, the property boasts a bright open-plan living area with direct access to the private courtyard, a sleek fitted kitchen with integrated appliances, a generous double bedroom with a good size single bedroom, and a contemporary bathroom. Further benefits include a long lease tenure and secure entry system.







# Brookhill Road, London, SE18



Total area (approx.): 41.7 sq. m (448.8 sq. ft)

## Dexters

Blackheath  
1 Stratheden Road  
London  
SE3 7SX  
Sales  
020 8815 2200

Energy Rating: C. We aim to make our particulars both accurate and reliable. However they are not guaranteed; nor do they form part of an offer or contract. If you require clarification on any points then please contact us, especially if you're traveling some distance to view. Please note that appliances and heating systems have not been tested and therefore no warranties can be given as to their good working order.

 **RICS** | Regulated  
Estate Agent  
and Letting Agent

[dexters.co.uk](https://www.dexters.co.uk)