



Eversley Road, SE7

£650,000

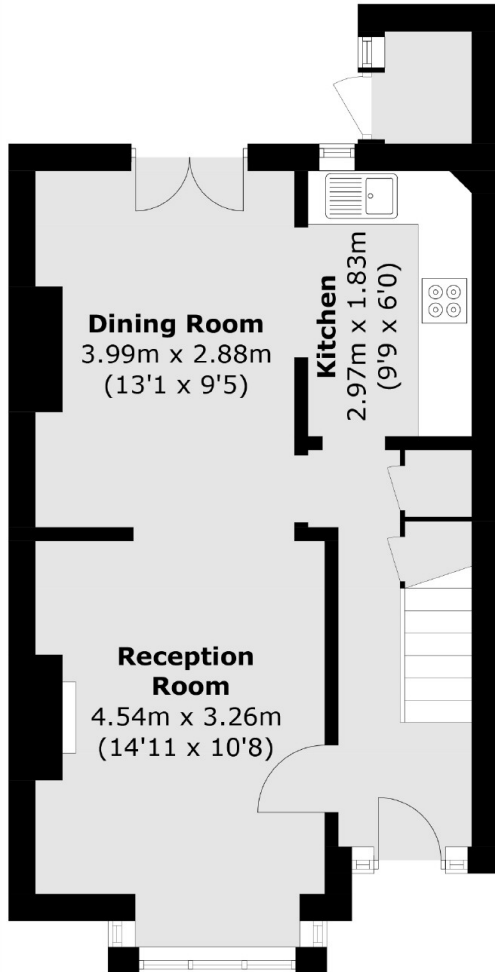
Three bedroom end of terrace house situated in a much sought after road on the Charlton Slopes. This pretty end of terrace has lots of scope for extending both to the rear and into the loft to provide a fourth bedroom and a second bathroom (STPP). There are period features throughout, including fireplaces and original floorboards, there is a South facing garden and the property is offered with no chain. Must be viewed.

Situated in one of Charlton's much sought after roads, within catchment area of three popular primary schools and an outstanding Secondary school. The property is close to Charlton and Westcombe Park stations and within easy access of the Jubilee line. Within minutes of Blackheath Royal Standard for its shops and café's and close to Greenwich Royal Park.

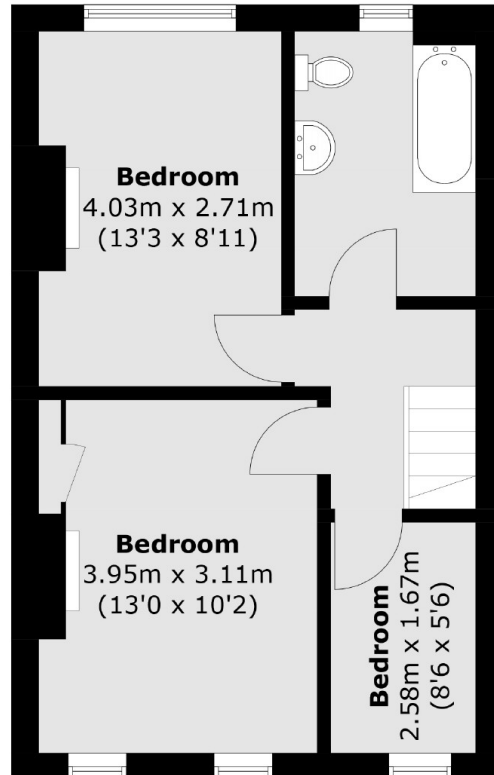
Features

- Offers Over £650,000
- Much Sought After Road
- Catchment Area For Schools
- South Facing Garden
- Potential To Extend
- Close To Transport Links
- No Chain

Eversley Road, London, SE7



Ground Floor



First Floor

Total area (approx.): 79.3 sq. m (853.6 sq. ft)
External Cupboard: 1.3 sq. m (14.0 sq. ft)