



Fairthorn Road, SE7

£289,995

Spacious one double bedroom purpose built ground floor flat with its own private entrance and a good size south facing terrace/ balcony. The property is in excellent condition throughout with a modern kitchen with integrated appliances which is open plan to a large reception room. There is a large double bedroom and contemporary bathroom. This apartment is offered with no chain.

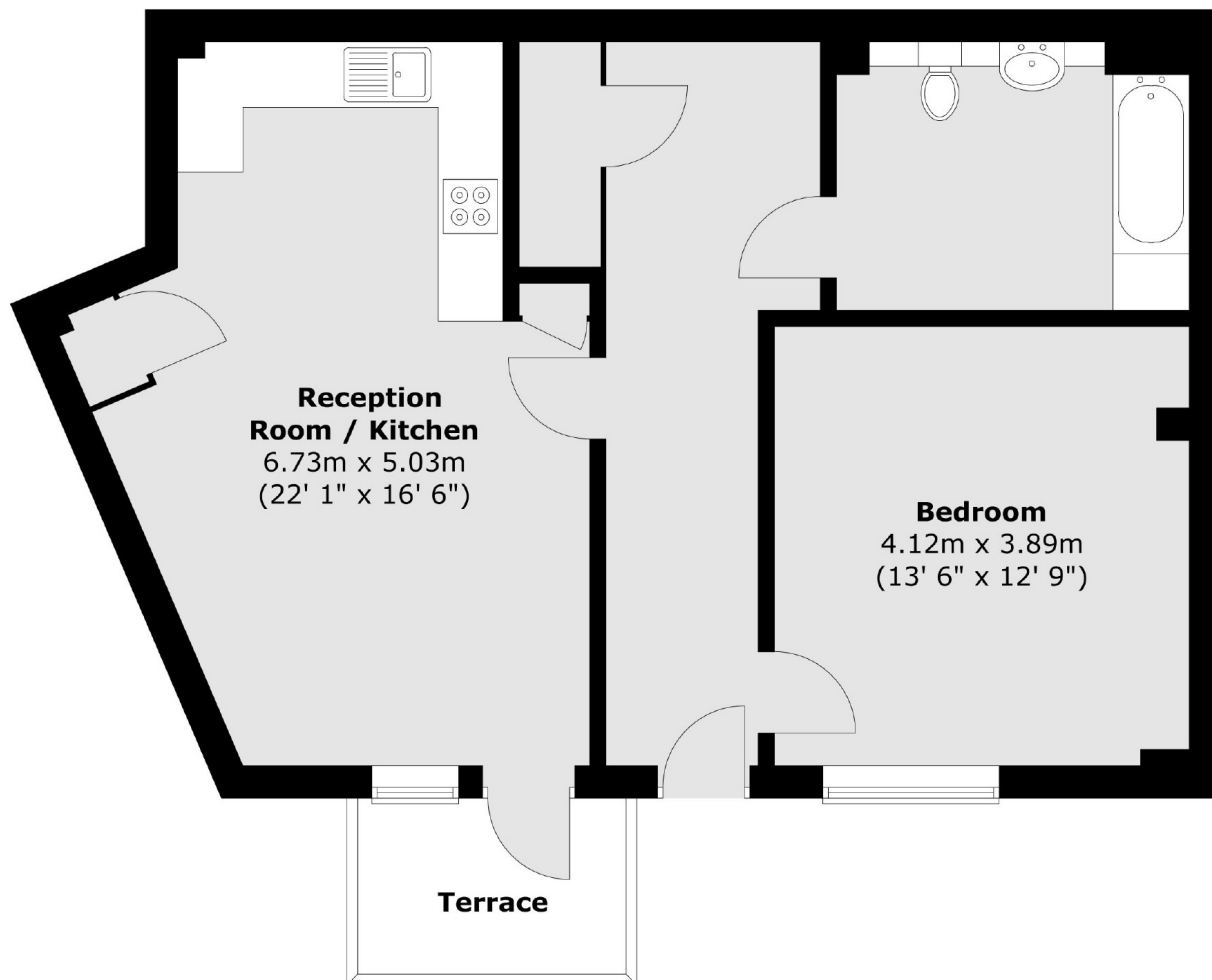
Situated in an excellent position for Westcombe Park Station, within easy access to North Greenwich Jubilee Line and minutes from the shops and superstores at Charlton.

Features

- Large One Bedroom
- Private Entrance
- Large Terrace
- Excellent Position For Transport
- Close To Shops And Amenities
- No Chain

Fairthorn Road, London, SE7

Ground Floor



Total area (approx.) : 66.1 sq. m (711 sq. ft)
Total terrace area (approx.) : 4.1 sq. m (44 sq. ft)