



## Casterbridge Road, SE3

### £350,000

Situated on the third floor of the building, is this two bedroom apartment with stunning views over communal gardens.

Just a short walk from Blackheath village, there is a wonderful choice of outstanding schools, restaurants, bars and supermarkets close by, plus excellent transport links (Blackheath Station - 0.6 miles; Kidbrooke Station - 0.5 miles). The apartment is ideally situated for exploring local parklands and historic landmarks including Greenwich Park and the Heath.

### Features

- Sought After Location
- Private Balcony
- Two Double Bedrooms
- 0.6 Miles For Blackheath Village
- Communal Grounds
- Free Parking





## Casterbridge Road, SE3

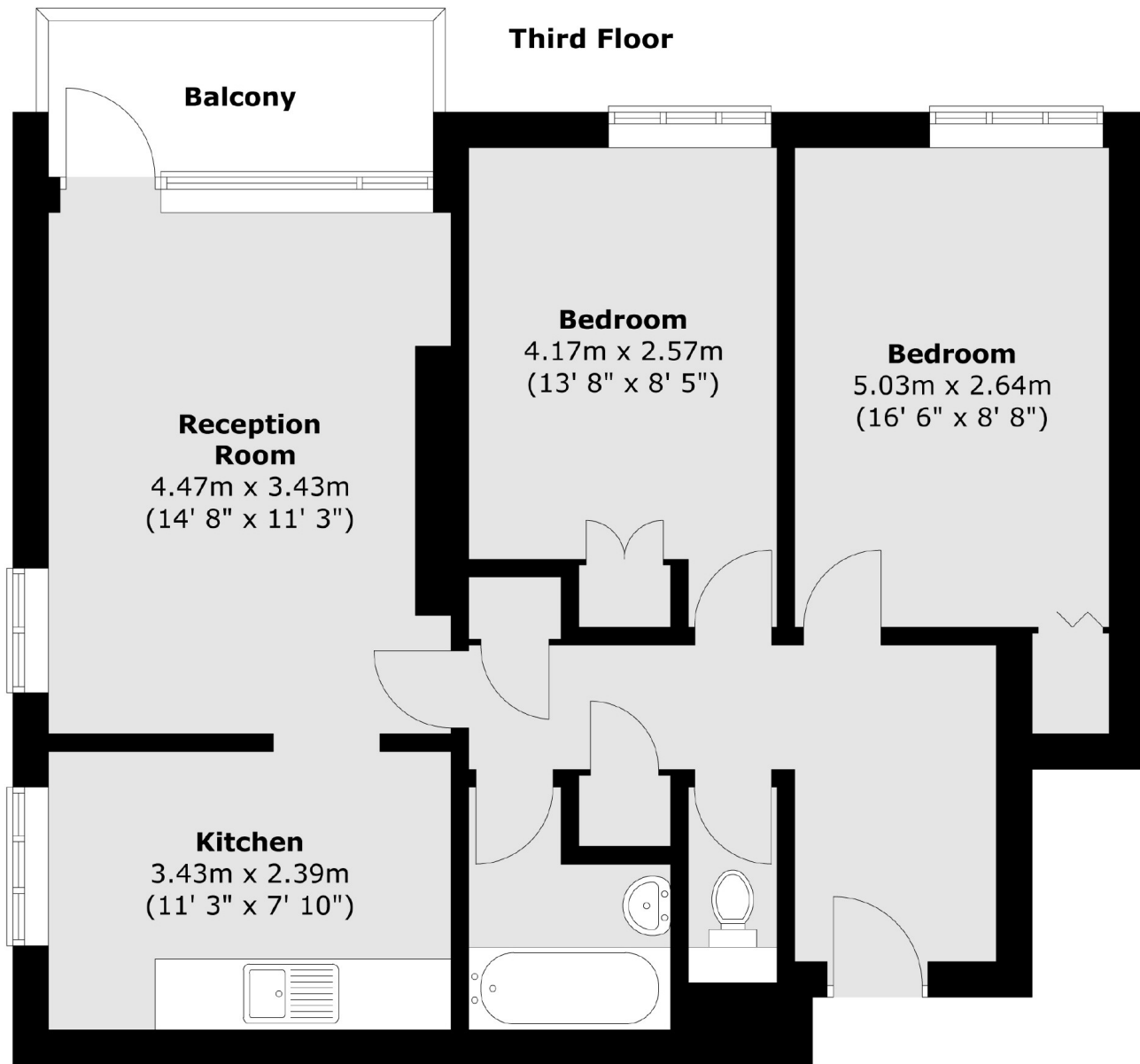
This well-proportioned two-bedroom flat offers generous living space and a practical layout throughout. Both bedrooms are comfortable doubles, each benefiting from built-in storage. The property features a separate fully fitted kitchen, a modern bathroom, and an additional separate toilet for added convenience.

The bright reception room provides plenty of space for a dining area and opens onto a private balcony with peaceful views over the communal grounds and a picturesque pond perfect for relaxing or entertaining. The property has been recently improved with a new boiler and central heating system. The property also benefits from free street parking.





# Casterbridge Road, London, SE3



Total area (approx.) : 63.7 sq. m (685 sq. ft)  
Total balcony area (approx.) : 4.5 sq. m (48 sq. ft)