



Eastcombe Avenue, SE7

£450,000

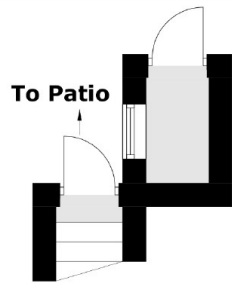
Edwardian first floor maisonette with its own private entrance and rear garden and offered with no chain which would make an excellent first time buy or investment purchase. The property is neutrally decorated throughout and has period features, high ceilings and spacious rooms. There is large fitted kitchen with space for dining, a separate reception room with a period feature fireplace and two double bedrooms. There is a further single bedroom or study and a loft space for storage.

Situated in an excellent position for Westcombe Park station, buses to North Greenwich and The Elizabeth Line. Close to Greenwich Park and Blackheath Royal Standard for its cafes, shops and restaurants.

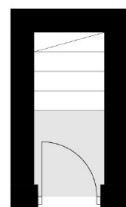
Features

- Three Bedroom Maisonette
- Private Garden
- Close To Shops & Transport
- Share Of Freehold
- Large Kitchen
- No Chain

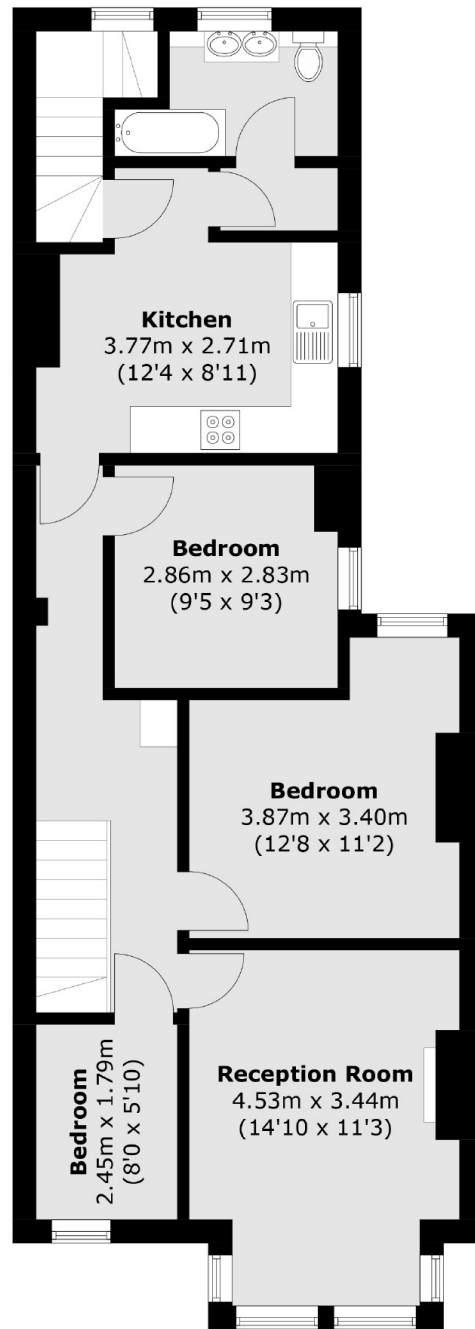
Eastcombe Avenue, London, SE7



Ground Floor



Ground Floor



First Floor

Total area (approx.): 76.6 sq. m (824.4 sq. ft)