



## Bowen Drive, SE7

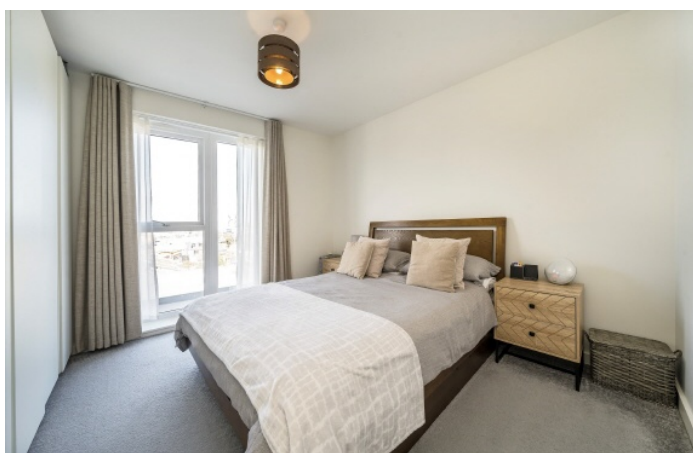
### £475,000

With great proportions and plenty of natural light throughout, this two double bedroom apartment has been neutrally decorated throughout to create a wonderful contemporary home and has a superb private balcony offering panoramic views of London.

Bowen Drive is located within easy reach of Greenwich Shopping Park, home to several supermarkets and a variety of shops whilst Westcombe Park and Charlton rail stations offer frequent rail connections into central London. North Greenwich for the Jubilee line is a short bus ride away.

### Features

- Over 800 Sq Ft
- Two Double Bedrooms
- Two Bathrooms
- Private Balcony
- Large Reception
- Panoramic Views



## Bowen Drive, SE7

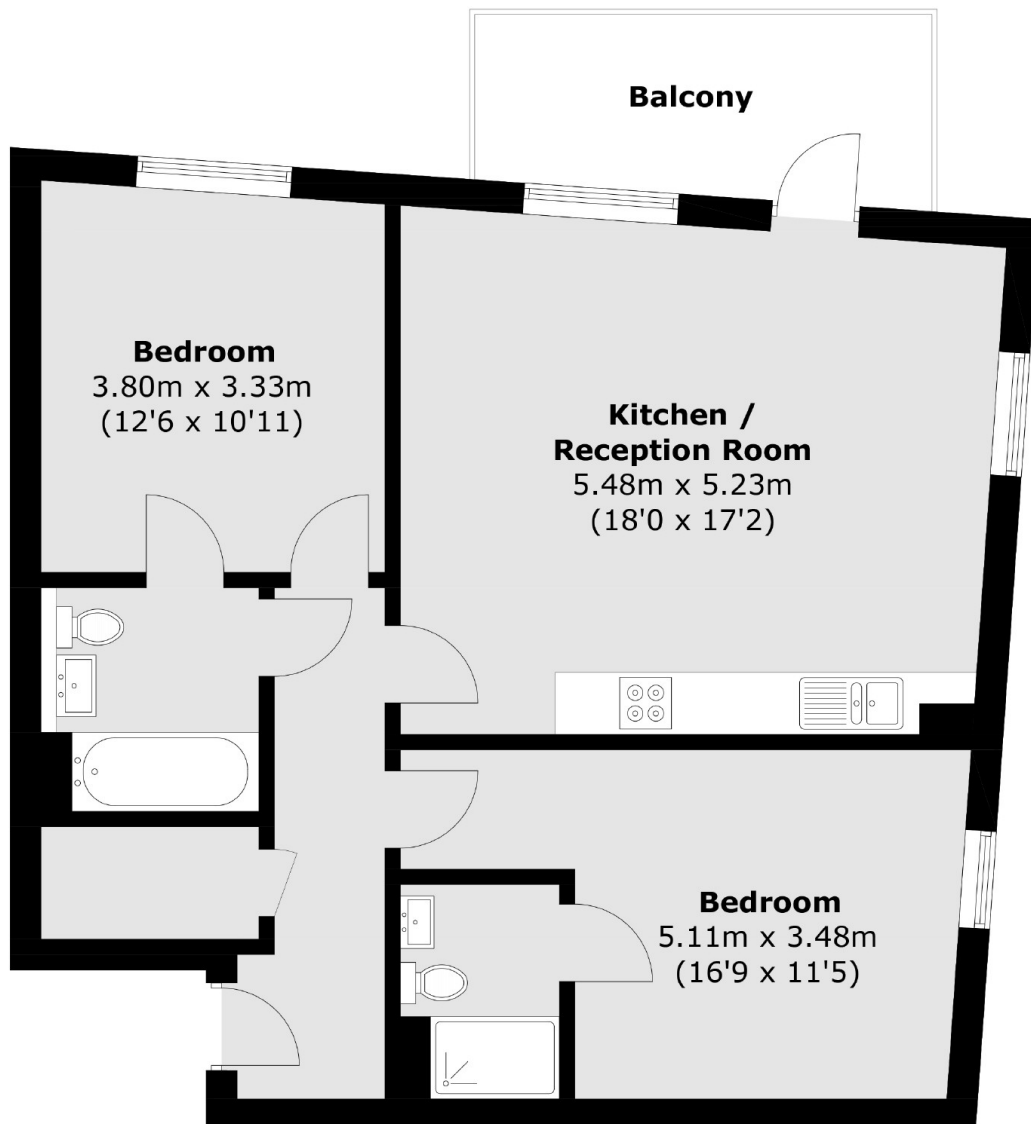
The property is entered via an inviting hallway with useful storage cupboard which leads into a large and sociable 18ft reception room opening to a private balcony. This, together with the generous and well-fitted open-plan kitchen, creates a great living space with plenty of room for a dining table.

Elsewhere two good-size double bedrooms are served by a stylish Ensuite shower room and well appointed family bathroom/WC.





# Bowen Drive, London, SE7



Total area (approx.): 75.1 sq. m (808.3 sq. ft)  
Balcony area : 7.8 sq. m (83.9 sq. ft)

## Dexters

Blackheath  
1 Stratheden Road  
London  
SE3 7SX  
Sales  
020 8815 2200

Energy Rating: B. We aim to make our particulars both accurate and reliable. However they are not guaranteed; nor do they form part of an offer or contract. If you require clarification on any points then please contact us, especially if you're traveling some distance to view. Please note that appliances and heating systems have not been tested and therefore no warranties can be given as to their good working order.

 **RICS** | Regulated  
Estate Agent  
and Letting Agent

[dexters.co.uk](https://www.dexters.co.uk)