



Reynolds Place, SE3

£850,000

Dexters



Reynolds Place, SE3

A delightful and well proportioned Victorian house with an architecturally designed statement extension and outstanding garden in the heart of the highly desirable and super convenient Rectory Fields Conservation Area.

The architect of the beautiful extension clearly knew exactly what they were doing with the large glass sliding doors and elongated roof skylight cleverly maximising the impact of the property's open rear outlook and ensures an outstanding view of the sky and large sunny garden which is attractively planted and landscaped. It also ensures fantastic light into the back of the property and lower ground floor creating the most wonderfully bright and appealing kitchen/family/dining room. The room is well equipped with good kitchen units and worktop space whilst leaving plenty of space for a dining table.

The bedroom, to the front of the first floor, has a sunny disposition courtesy of the large square bay window and can be easily used as a second reception as the current owner demonstrates. On the same floor is a lovely family bathroom with large rear window to match, it comprises a double sink unit, bath with separate shower and WC. There are two further bedrooms on the top floor the rear with useful built in wardrobes.

Situated in a much sought after road, close to the shops, cafés and amenities and close to Royal Standard and within close proximity of Leigh Academy

Features

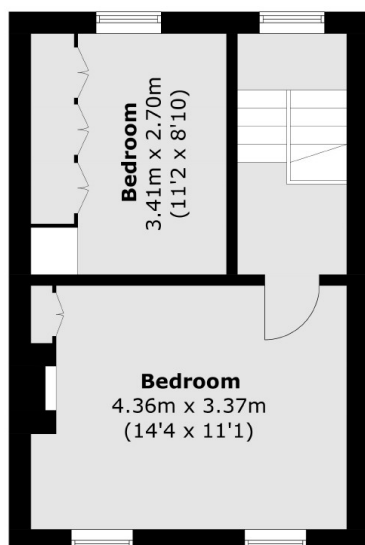
- Sought After Road
- Architecturally Designed Extension
- Three Bedrooms
- Close To Shops & Transport
- Excellent Decorative Order



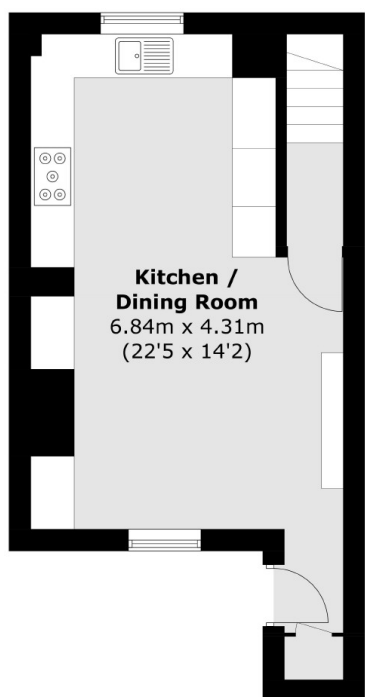




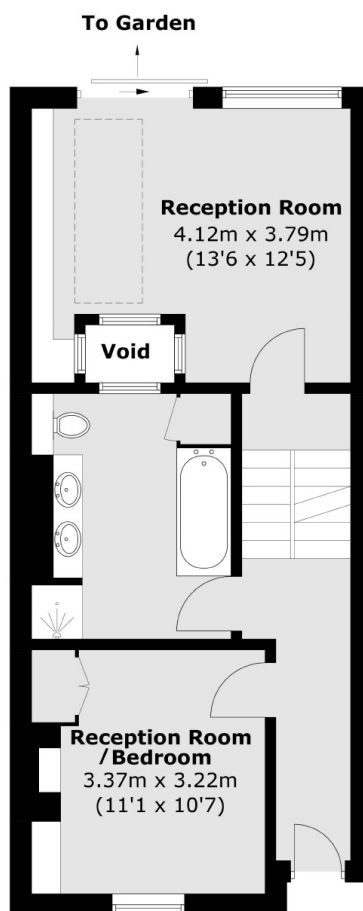
Reynolds Place, London, SE3



First Floor



Lower Ground Floor



Ground Floor

Total area (approx.): 107.1 sq. m (1,152.8 sq. ft)
(Excluding Void)