



Dinsdale Road, SE3

£425,000

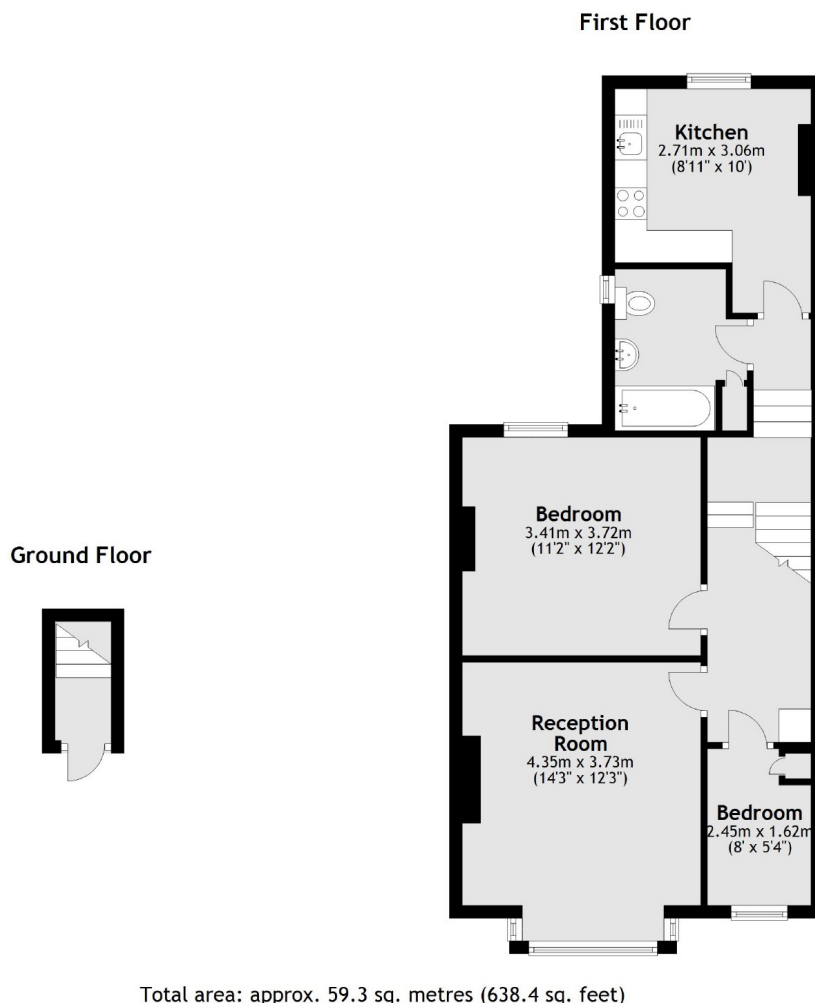
Spacious two bedroom top floor conversion flat which is neutrally decorated and offered onto the market with share of freehold and no chain. Accommodation comprises of a reception room to the front, a large double bedroom and a second single bedroom. There is a kitchen with room for dining and a loft space which could be converted to create a further bedroom and bathroom (STPP). Excellent first time buy.

In an excellent position for Maze Hill and Westcombe Park stations, close to Greenwich Royal Park and the centre of Greenwich for the shops, restaurants and famous indoor market.

Features

- Much Sought After Road
- Minutes From Maze Hill Station
- Close To Greenwich Park
- No Chain
- Share Of Freehold
- Loft Space

Dinsdale Road, London, SE3



Total area: approx. 59.3 sq. metres (638.4 sq. feet)