



Thunderer Walk, SE18

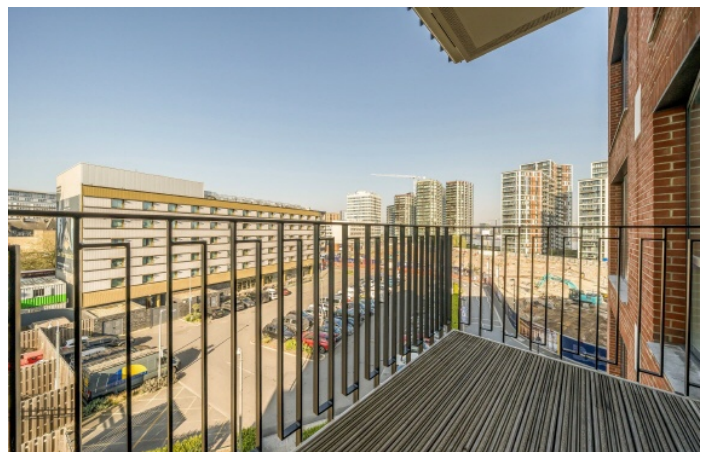
£375,000

Modern one bedroom apartment, situated within a sought after modern development in the heart of The Royal Arsenal.

DLR and TFL Rail at Woolwich Arsenal Station, providing direct links into the city via Bank with the green spaces of Maribor Park just a few minutes walk away. Woolwich Royal Arsenal Pier is easily accessible for boat services by Thames Clippers with frequent bus routes into North Greenwich for Jubilee Line.

Features

- Over 540 Sq Ft
- Naturally Bright
- Open-Plan Living
- Sought After Development
- Convenient Location
- No Onward Chain



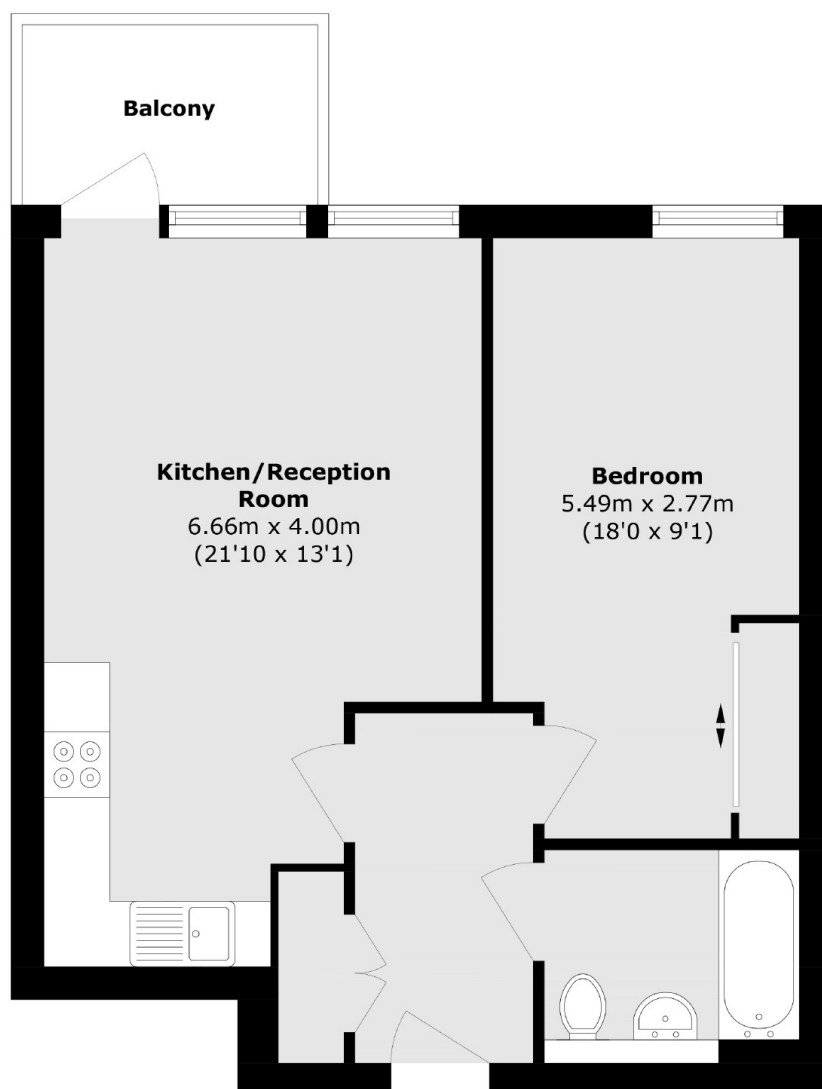
Thunderer Walk, SE18

Well presented throughout and arranged around a spacious central entrance hall with useful storage, accommodation comprises a large open plan reception with stylish fitted kitchen leading to a private balcony. Good-size double bedroom with built-in wardrobes and a contemporary bathroom/WC.

Further benefits include access to the exclusive The Waterside Club with residents only gym and spa, private cinema and 24 hour concierge.



Thunderer Walk, London, SE18



Total area (approx.): 50.2 sq. m (540.3 sq. ft)

Total area (approx.): 4.4 sq. m (47.3 sq. ft)